

WILLYS Words

AUG/SEPT 1987 #7

NEW ADDRESS
WEST COAST WILLYS CLUB
222 SAN CLEMENTE
VENTURA, CA 93001



OFFICIAL PUBLICATION OF THE.....
West Coast

WILLYS Club.

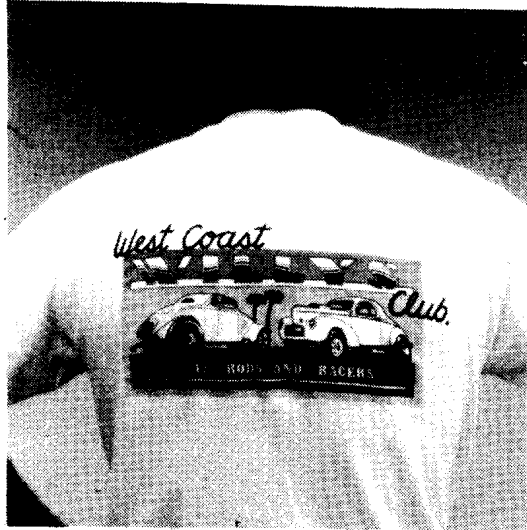


33-42 RODS AND RAGERS

222 SAN CLEMENTE-VENTURA-CA-93001

047 6/4/86 36p 36s
Larry Krider
659 Paraiso Ave-Spring Valley
CA 92077

CLUB GOODIES



WEAR IT WITH PRIDE!!

The official W.C.W.C. T shirt. This full-color, high quality (100% cotton) shirt is available in S,M,L&XL.

Get yours by sending \$10.00 to.....

W.C.W.C.
222 SAN CLEMENTE
VENTURA CA
93001

PRICE INCLUDES SHIPPING !

Don't forget to state size when ordering!



The official club decal has black logo on white background with a red border. Chrome "Willys" sets it off. You need one for your toolbox as well as your car. \$1.50 each.



Club caps are red and white with club logo printed in black.

\$6.00 each, price includes shipping.



HAT PINS.
.....

Hat pins are white and black enamel with chrome detail. Actual size shown. \$5.00 each.

BACK ISSUES.
.....

\$2.50 each, #1 are photocopies for now, #3,4,5&6 are originals. Price includes shipping.



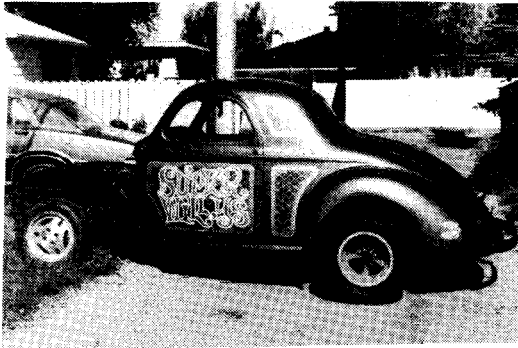
COVER --

The beautiful Candy blue '33 type pick-up of Tom Willford strikes a classic pose at the top end of Fremont Dragstrip.

BACK COVER --

The same tuck seen on the cover only this picture was taken about twenty one years ago when it was raced by Ron Bizio and Chuck Finders.

LETTERS



Well a year has passed since I joined but I finally got my hands on a Willys coupe. It's a stock 1938 and was sitting in a farmers barn since 1962. Ironically it was only 50 miles from where I live. I will be building it 60's gasser style.

Also I wanted to inform the members about a movie for Willys fans. It's called 'HOT ROD' by Charter Entertainment. Catalog number is 90105. It centers around a guy with a 1941 Willys with a blown 426 Hemi in it. Lots of dragstrip and street shots of the Willys with a good story behind the movie also. It was made in 1979, I had seen it on TV a couple of times and now I have bought the video tape. The Willys is in at least 3/4 of the show.

A friend of mine has the shell of a '40 Willys gasser from the late 60's and I was wondering if any members might remember it or have any shots of the car in it's original race form? It is called 'Super Willys', is blue with lace panel paint job. Car used to run a Crower injected 426 Hemi with a Clutchflite trans'. Racers name was Larry Twigg, it used to run out of Windsor, Ontario, Canada. It ran at Detroit occasionally. I'd like to get some original shots of the car in race trim so if anyone out there can help, please get in touch with me at the address below.

Gary Mintz
9519-52 st
Edmonton, Alberta
Canada, T6B-1G8

Gary's car can be seen in this issues Club Cars along with Steve Castelli's 'Hot Rod Willys', this car was one of 4 used in the making of the movie. I plan to do a story on the 'Hot Rod' movie as soon as I can gather enough info'. Thanks Gary for the news.

Got to shoot the breeze with K.S. Pittman at the Nostalgia Nationals. We go back a long time as I used to work for S&S Parts Company which was his major sponsor.

In the early 60's we had the class covered with 5 cars in A/Gas Super, Gene Altizer in A/Gas, Fred Bear, Hill & Zartman and Dave Hales. There were 3 Willys, 1 Anglia and a '55 Chevy.

Your photo in Willys Words #6 of the wild wheelie looks like Hill & Zartmans Filthy Forty which was the first wheel standing gasser on the East Coast. There were pictures in the Drag News showing the Filthy Forty with all 4 wheels off the ground as your photo shows. This car was called the Filthy Forty because it was always in primer and very dirty.

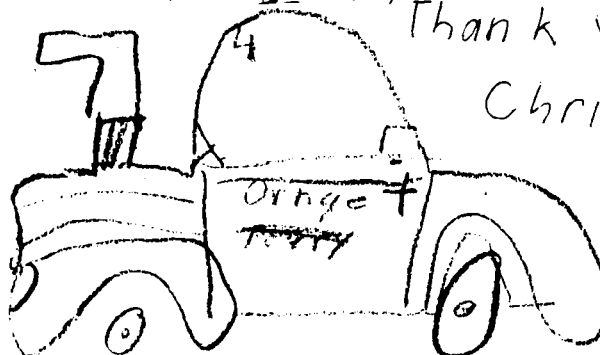
Porky Hill was the driver and weighed about 300 pounds. Hill and Zartman owned a fiberglass shop which I think



A letter from Chris Arteaga, 10 yr old daughter of Wayne Arteaga, #326. Thanks Chris!

for you I'm not an member of the club, I'm 10 years old I thank you for the W.C.W.C. t-shirt decal and my 1939 sedan in the book that you send my Dad I say the word for my sedan My Dad gave me 1 book 1 decal - Had the day Egg T-shirt My Dad was Jealous I think. 3 years I have been at The Dags and Aug. You can keep those picture Thank you

Chris Arteaga



is Anderson Industries. If any of the members are from the East and know of any of these people, please give me a call.

James M Snyder #076
(408)942-1899
(408)263-3715

Hey, I know just what you need is a member with no car but I dream of having a Willys soon, as you know, they aren't easy to find and don't come cheap. I am looking for a '41 fixer-upper, so I can build it the way I want it. My boyfriend has a '40 Ford convertible and we go to alot of car events. I have seen lots and lots of cars but of all of them, I fell in love with the Willys. I will continue to rejoin until someday I have my own Willys coupe!

Carol Spencer #065
Vacaville CA

Well Carol you are certainly not the only member without a Willys, roughly 20% of the members don't own one, yet, while many members have two or more. Non owners can be the most dedicated Willys fans!

I have Two Pictures

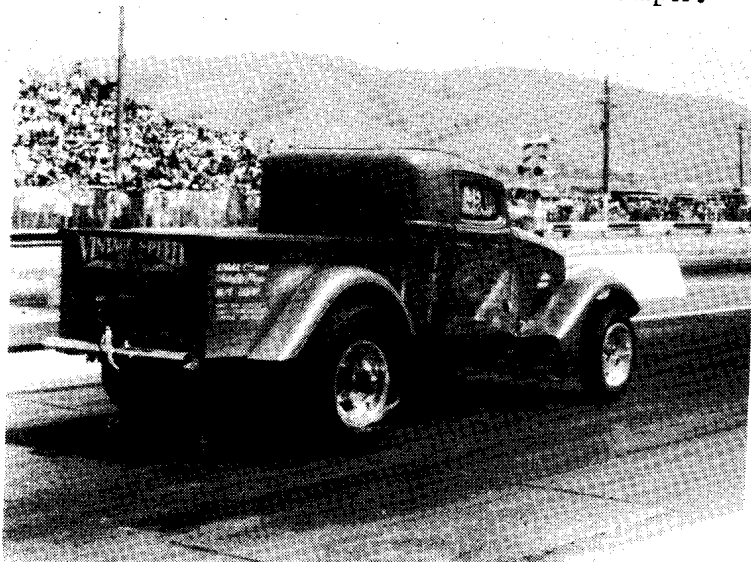


WILLFORD'S WARRIOR

Tom Willford, #130, is a 40 year old retired helicopter pilot from Tacoma, Washington. His pride and joy is a very well known '33 pickup gasser that was very successfully campaigned in the 60's by Ron Bizio.

First outing for the truck since it's restoration was the 1987 NDRA Nostalgia Nationals held in Fremont, California where it had an impressive first meet with Marty Strode at the wheel. Since then it has been fitted with hand controls and is now driven by Tom!

Back in '66 the Ron Bizio/Chuck Finders Team, then sponsored by Cal Automotive, made their debut at Bakersfield in March. Then at the second race at Irwindale they set a new AHRA record, 9.52 @ 155mph.



Ron campaigned the truck on his own from '67 on setting many track records and winning major events at Lions, Irwindale and Orange County. Best ET was 8.48 and best mph, 166. Major magazines thought enough of Ron's Ride to feature it, Popular Hot Rodding in the November 1968 issue and Drag Strip in December '68.

Chuck Finders, #1933, was the man behind the original construction of the truck, he boxed the chassis, built the roll cage, chopped the top 4" and performed the aluminum work. S&R Chassis added the custom gas tank, dropped tube axle and Corvair steering box in 1968. Aldan coil-overs now support the front end.

Cab is actually a 1936 model, no Willys pick-ups were released in 1933-34. The restoration was completed in just 15 months and anyone who's seen it will tell you it's a showstopper. The flawless candy blue paint was applied by Dan Leuthold who also handled the bodywork. Gold leaf lettering was applied by Harley from Portland. Before it was painted it got a new 'glass front end and a handmade aluminum bed, a duplicate of the original. New box was built by Rick Apple who is also responsible for the new door panels. Top insert, bed cover and roll cage covers were sewn up by Al Lyda. Marty Strode

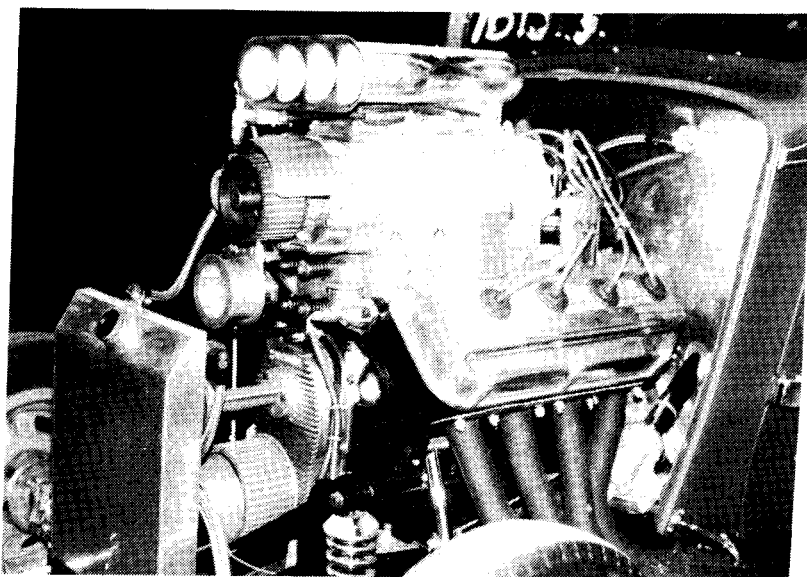
was responsible for most of the chassis restoration.

Rear wheels are 16x8 Halibrands with old M&H slicks, soon to be replaced with up to date rubber. Front wheels are 15x4 Halibrand Kidney holes with Pirelli tires.

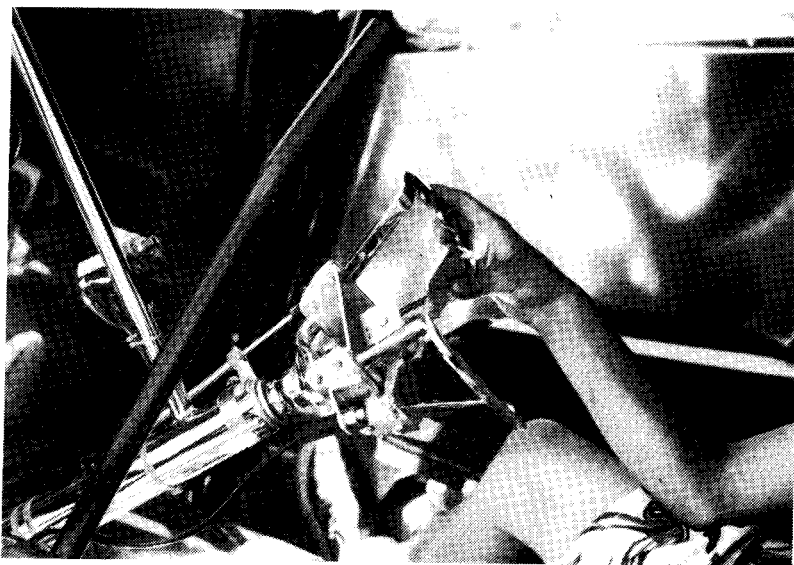
Engine is a 398" Chrysler Hemi with stock crank, Ed Pink rods, Venolia pistons, Isky cam, Barnes oil pump and Engle roller lifters. Heads are '57 models highly ported and polished. Isky valve springs, Donovan rockers and valve covers are used. Induction consists of a 24% overdriven 6.7l Jimmy blower mounted on a rare M/T magnesium manifold. 4-hole fuel injector is a Hilborn unit. Engine originally ran a Delta 3" blower drive with 2" belt which worked well for Ron but Tom is updating due to a problem with belts being thrown. Cirello magneto is used.

Trans' is a 727 Art Carr Torqueflight with 2500 stall speed. Rear end is '57 Pontiac with 4:56 gears and Mark Williams spool and axles.

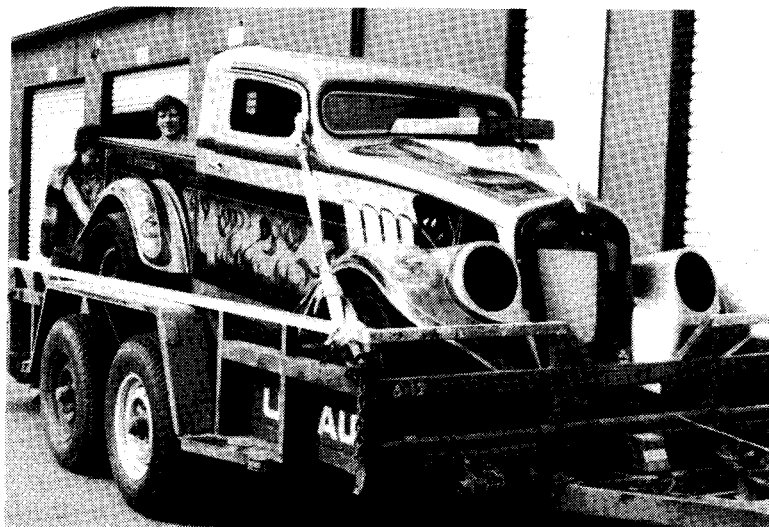
Tom started "Vintage Speed" as a hobby and now stays busy locating/buying/trading nostalgia speed parts. Tom built the truck to bring back the old days for the younger generation, his next project will be a '41 Willys coupe for AA/Gas, he also has a '36 Willys pickup he thinks would make a good tow truck for his race truck, right on Tom!



Engine was built by fellow north-West Hemi/Willys racers, Jack Coonrod and Wayne Harry. This baby sounds as good as it looks!

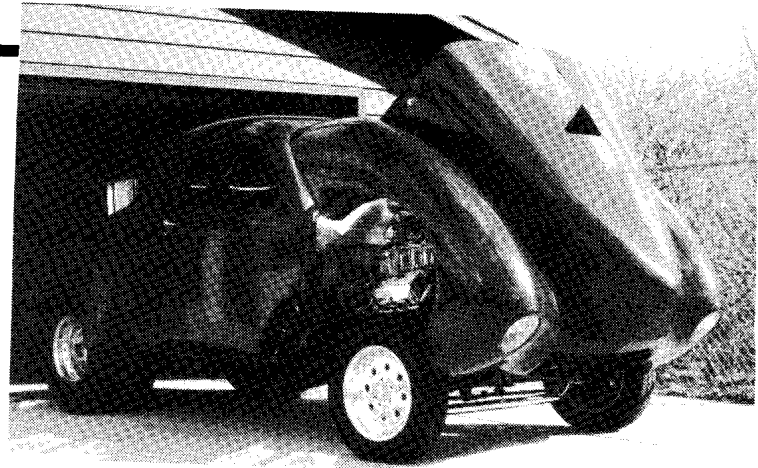
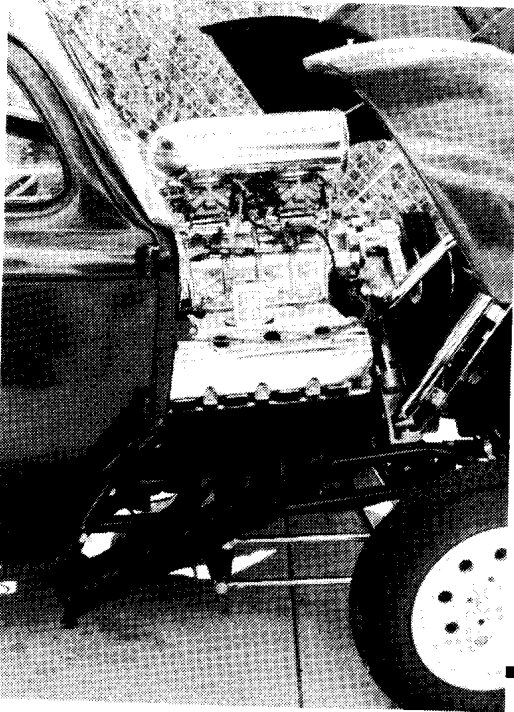


Hand controls are mounted to Butterfly steering wheel, thumb operates throttle and a push on the big lever applies brakes.



After the truck was retired from the strip it made it's way to Stick City, (an LA rod dealership), it went through 2 owners until 1972. It then sat in storage until 1986. This is how the truck looked when Tom bought it after 13 years in storage. It gained a psychedelic paint job, 440 Wedge engine and Pro-Stock hood scoop, it was in rough shape. Tom located it through an ad' in National Dragster. Tom recognised the truck and had to have it.

CLUB CARS

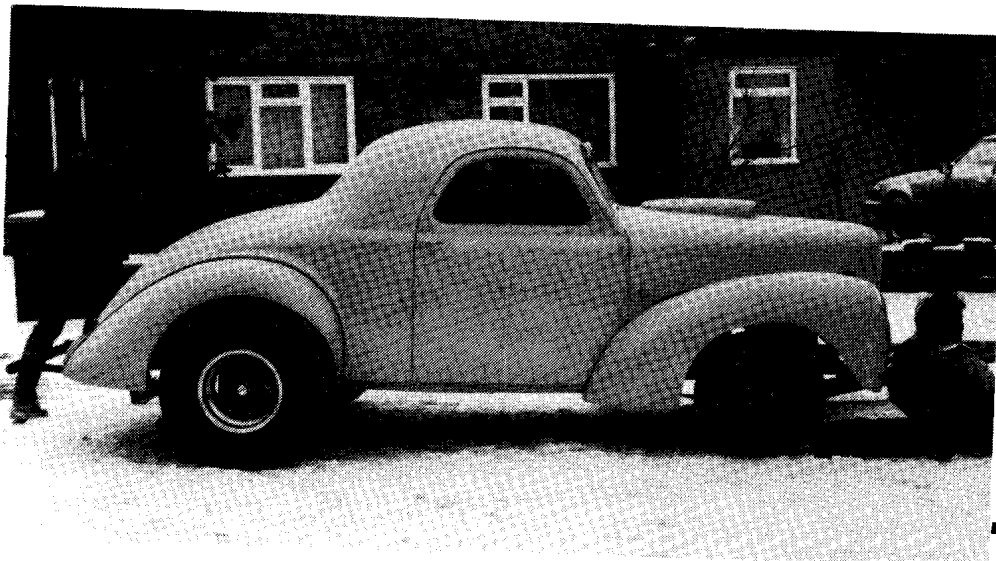
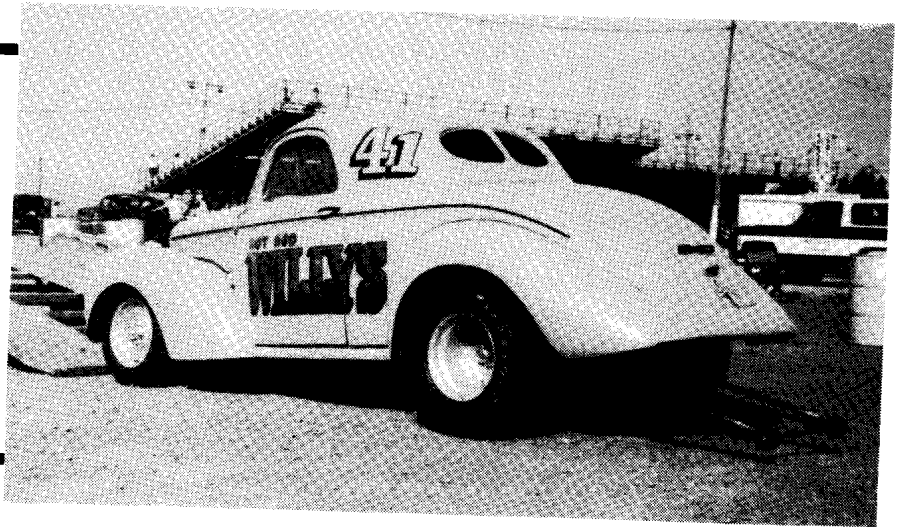


BUTCH WOLCOTT #081
KAYSVILLE UT

Butch has one awesome, street legal Willys here! Late model blown Chrysler looks right at home under the one piece tilt front end. Tubular chassis is by Chuck Finders, car is just completed and is now attending local rod runs etc.

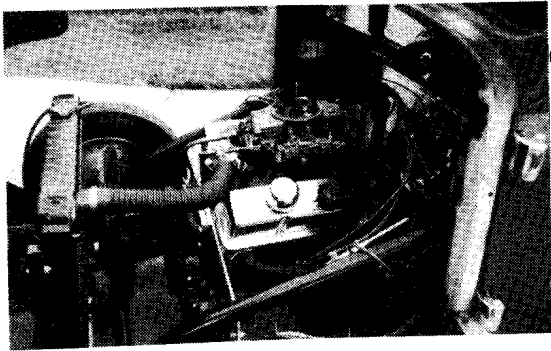
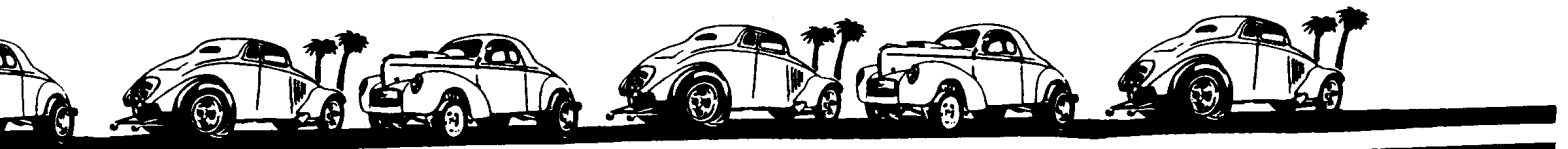
STEVE CASTELLI #335
WINDSOR CA

Steve's '41 coupe is one of the cars used in the making of the movie 'Hot-Rod/Rebel of the Road', that's where it gets the name 'Hot Rod Willys'. Race only coupe has 427 Chevy engine and Powerglide transmission with brake. Rear end is a narrowed 9" Ford with 5:38 gears. Front end and rear fenders are fiberglass. Car runs in the 9's at almost 140 mph!



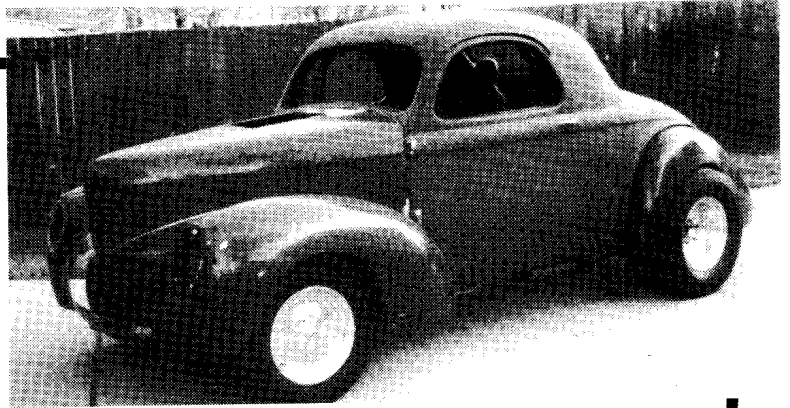
MIKE TAYLOR #193
BRISLINGTON BRISTOL
ENGLAND

Mike is the second owner of this coupe since it landed in jolly old England a couple of years ago as a stripped down old gasser. Mike has it in pieces now for a total rebuild. Mike recently made a trip Stateside to attend the Street Rod Nat's and a few other events and also pick up a few parts for the Willys, he was lucky enough to find a complete steel front end his first day in the country!



RANDY TAVOLETTI #227
CHICAGO HEIGHTS IL

Though not yet finished, Randy's coupe is a driver. Chassis is custom built from 2"x3" tubing with full roll cage. Tube front axle has GM disc brakes, rear end is narrowed '57 Olds' mounted with coil-overs. 302 Chevy provides the power, Z-28 engine has General-Kinetics cam, solid lifters, Milodon 8 qt oil pan, 11-1 compression, roller rockers, dual valve springs, Vertex magneto and Holley 750 double pumper on Torker Manifold. Trans' is a Turbo 400 with manual shift valve body. Interior features plenty of aluminum panelling, lightweight bucket seats, Sun tach and Mallory gauges. Radiator is from a '61-'64 Olds'/Pontiac, headers are Hooker Headers for a Vega, wheels are Centerlines. Randy isn't sure about color yet but is thinking about a medium blue.

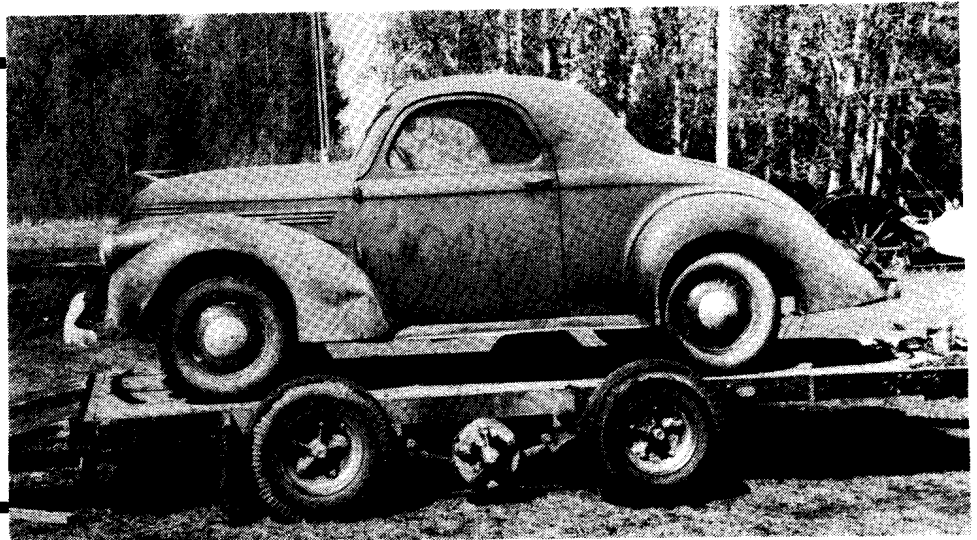


GARY RATCLIFF #105
TULSA OK

Gary and his brother Alan are joint owners of this '40 coupe. Car is all steel apart from the rear fenders and hood scoop. Engine is 350 Chevy with 780 Holley carb and Edelbrock intake. Hays Flywheel is backed up by Hays clutch disc, pressure plate and Muncie 4 spd with Hurst shifter. 5:86 Chevy rear end is mounted on leaf springs. Stock chassis is boxed and has stock front axle and steering, soon to be updated. Interior features custom built seats, leather upholstery and SW gauges. Master cylinder, pedal assembly and radiator are all '55 Chevy.

GARY MINTZ #142
EDMONTON ALBERTA
CANADA

This is how Gary's coupe looked when he brought it home. It has since received a 1940 front clip and Dana 60 rear end. When finished it will resemble a 60's gasser and will run a 427 L88 engine and Doug Nash 5-speed. Car had been sitting in a farmers barn since 1962 when Gary found it, only 50 miles from his home.



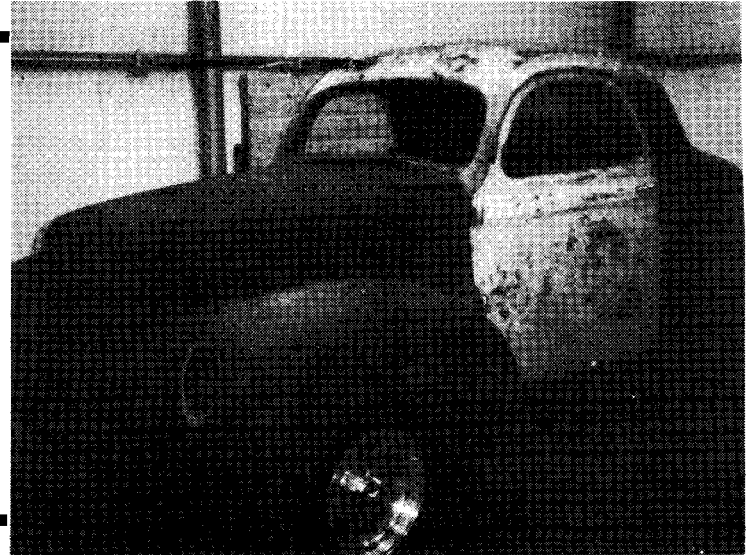


DWAYNE BRACHER #223
COFFEYVILLE KS

Dwayne drove 1200 miles one way to pick up this '41 coupe that is his new toy. This is Dwayne's first Willys or street rod. Car has 'glass tilt front end, deck lid and rear fenders. Engine is a 327 Chevy backed up by a Turbo 400 and Chevy rear end. Car also has power steering, Nova sub-frame, tilt wheel, fenderwell headers, Celica dash and Cutlass seat, (brown crushed velour). Paint is cream and metallic brown.

BILL KOCH #300
BARLESVILLE OK

This is how Bill's coupe looked when he got it home. Car now has a Willy Works 2"x3" tube chassis with Mustang II front suspension. Rear end is now a narrowed 9" with Nodular, posi' third member, Strange Eng' axles and disc brakes. Aldan coil overs and Alston ladder bars hold it in place. Engine is a hot tunnel rammed 302 Ford with dual 600 double pumpers and an Enderle injector scoop. TCI built C4 has shift kit, 10" converter, 3500 stall speed. Bill has been working on this '40 for 2 years now. When finished the car will be metallic silver with candy blue flames and will roll on Weld Superlite wheels.



BILL HALBREHDER #376
WHITE BEAR LAKE, MN.

Bill has had at least one Willys since 1960, he currently has 3. Shown are his '38 sedan with stock running gear, ('48 engine), also his '38 pickup which has Mustang front suspension, Buick V6, 350-Turbo trans' and Ford rear end. Pick-up is in the early stages. Bill's other Willys is a '38 coupe that he has just acquired.

Milan '87

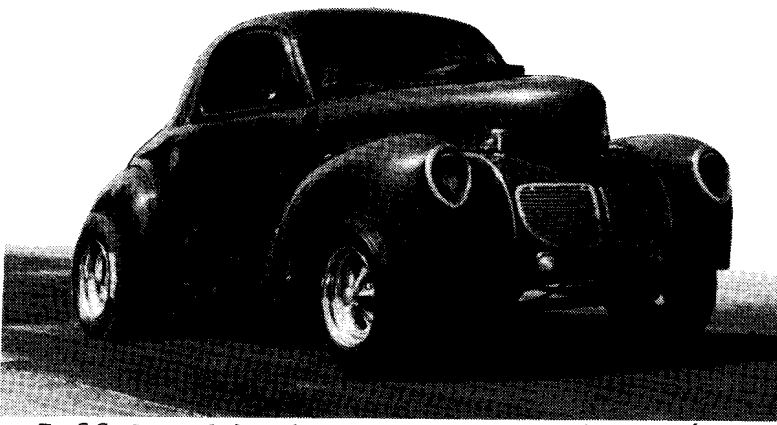
A WILLYS ELIMINATOR?

This years NDRA Northern Nationals held at Milan, Michigan, on June 13 & 14 was a huge success, especially for the Willys lovers in the crowd. There were 9 Willys in attendance and all but 2 competed. To add to the excitement, Willys competed in the finals of 2 Eliminator.

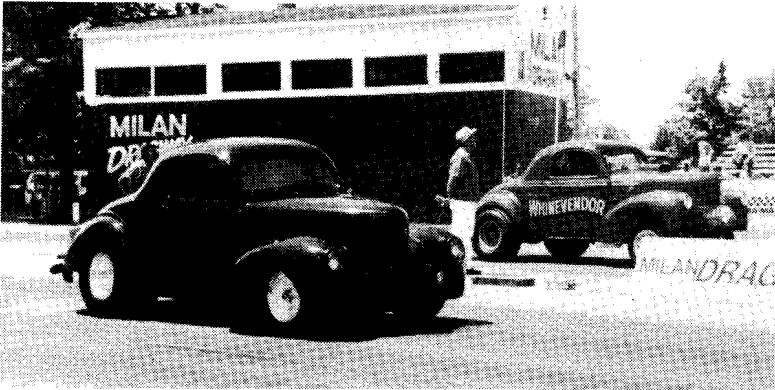
In Eliminator #3, Loren Schwartz of Michigan, driving '40 Willys lost to a '56 Chevy. In Eliminator #2, Joel Hahn of Lexington, Kentucky, driving a '37 faced Jeff frank of Michigan driving a '40. Joel won and went on to compete in the finals of "King of the Hill", only to lose to a Bantam roadster.

The license plate on Loren Schwartz's car said it all, 'Drag Racing Gives Me The Willys'.

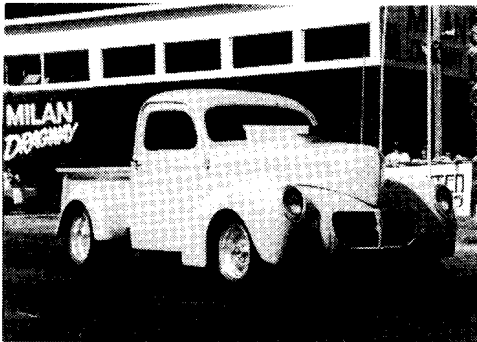
Ross Martin.



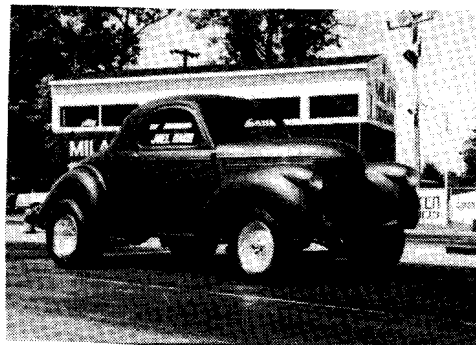
Jeff Frank's '40 coupe digs into the Milan blacktop.



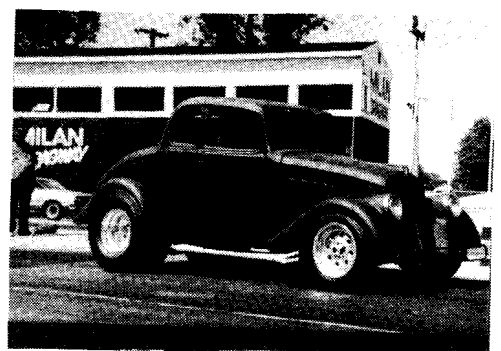
Bob Packard, #195, goes off against Joe and Linda Gren's 'Whinevendor'.



Bright yellow '40 pick-up looks like it's going 150 mph standing still!

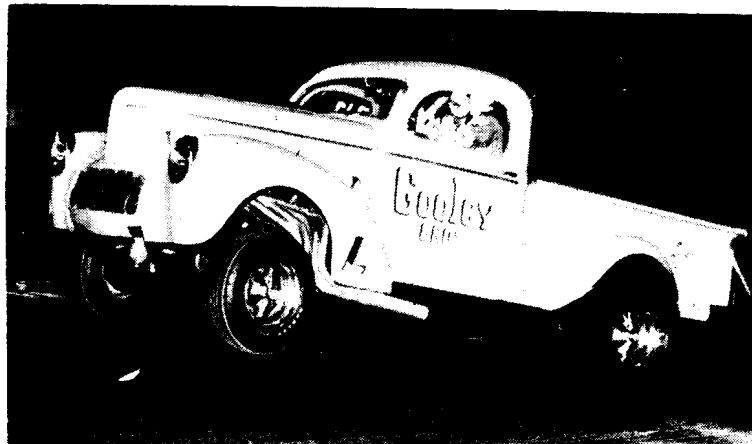


Joel Hahn's coupe looked great with metallic blue paint and centerlines.



Primer '33 coupe street-rod was the only early Willys in attendance.

WILD WHEELIES



WILD WHEELIES

CARS · TRUCKS
PARTS · LITERATURE

BOUGHT · SOLD
TRADED



The Willys Mann '33 to '42

(215) 584-1665
WEEKNITES & WEEKENDS

RON LADLEY
1850 Valley Forge Rd.
Lansdale, PA 19446

I have the largest inventory of 1933-1942 Willys vehicles, parts and literature available in the country!!! Loads of N.O.S., repro and used parts in stock at all times. Loads of sales catalogs, owners manuals, parts books, repair manuals etc. Send S.A.S.E. for free list of parts available. Literature requests please call with your list of needs. I also have cars and trucks available at all times.

RON LADLEY (215) 584-1665



TOP QUALITY FIBERGLASS SINCE 1963

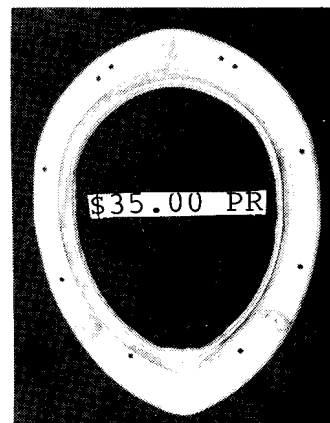
1933-'36 and 1937-'42 WILLYS

Hoods, Grille Panels, Fenders, Trunk Lids,
Window Moldings and More

—SEND \$3.00 U.S. FOR CATALOG—

1-301-796-4382
Fiberglass Bodies and Parts
for Street Rods and Racers

ANDERSON INDUSTRIES, INC.
6599 I Washington Blvd.
Elkridge, MD 21227



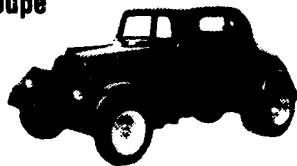
1940-42
HEADLIGHT RING-
ADAPTERS.

Goes inside the fender and holds the headlight ring in place. A beefed up duplicate of the original.

RANDY TAVOLETTI
169 W. 29th PLACE
SO CHICAGO HEIGHTS
IL 60411

(312) 756-3395 after 5PM

1933 Willys Panel Truck & Coupe All Fiberglass

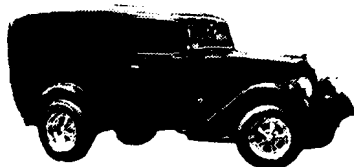


Complete with floor pan and firewall installed, 1 piece front end, rear fenders, deck lid, door hinges and window molding. Finished in black gelcoat.
Coupe-\$3995
Panel Truck-\$4495
FOB Pittsburgh, PA
Brochure-\$3.50

Sheffler Ent.

9015 Huron Avenue
Pittsburgh Pa. 15237
Phone 412 653-2250
Mon to Fri. 1 till 7

ASK FOR BOB



Mike Nordahl

(714) 980-3022



WILLYS REPLACEMENT PARTS



FINALLY THERE IS A WILLYS COUPE TAILLIGHT THAT REALLY LOOKS LIKE A WILLYS TAILLIGHT!

\$119.50 PER PAIR — PAD GASKETS \$13.95 PER PAIR

Complete taillight assemblies for 1937-42 Willys Coupes! They come with 12 Volt sockets & bulbs, chrome plated bodies and retainers & most importantly our authentic reproduction lenses. A taillight nobody can tell from the originals!

1933-'36 GRILLES

1940-'42 GRILLES

1933-'36 HEADLIGHT LENSES

1940-'42 HEADLIGHT LENSES

1933-'36 HEADLIGHT RINGS

1940-'42 HEADLIGHT RINGS

1939-'42 TAILLIGHT LENSES

"WILLYS" SCRIPT EMBLEMS

5575 Crooked Creek Drive • Alta Loma, CA 91701



FIBERGLASS 1940 + 1941 WILLYS COUPES AND PARTS

Frames, Hinges, Grilles, Headlight Bezels and Taillights

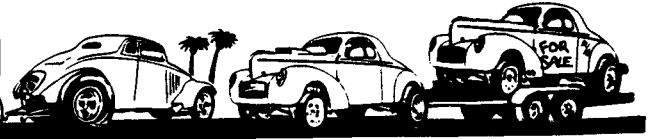
YOUR ONE STOP SOURCE for All Willys parts

Call for free Catalog — (914) 292-6703

THE WILLYS WORKS

Jct. Route 17 & 52 — Liberty New York 12754

CLASSIFIEDS



WARNING-VERY IMPORTANT
 To Properly Run the Moving Parts of This Vehicle
DO NOT Drive Faster Than the Following Speeds:

	Commercial Cars	Passenger Cars
For the First 100 Miles	35 MPH	40 MPH
From 100 to 500 Miles	45 MPH	48 MPH

If these warnings are violated, our Warranty is null and void.

ENGINE LUBRICATION

For temperatures 10° F to plus 10° F	SAE 10W
For temperatures 10° F to 32° F	SAE 20W
For temperatures 32° F to 90° F	SAE 20
For temperatures above 90° F	SAE 30

OIL CHANGE
 Change oil after first 500 Miles and every 2000 miles thereafter
 (See Instruction Book)

WILLYS-OVERLAND MOTORS, INC.

FOR SALE: Original Willys metal stick-on warning ID plates, high quality, 3 3/4 x 6 3/16. States running speeds, engine lubrication specs and oil change intervals. \$10.00 each plus \$2.00 postage and handling. CA residents add 6% tax. send to Gearco, 454 Goulburn Ct, El Cajon, CA, 92020.

FOR SALE: 1941 Willys Pick-up. Perfect sheetmetal, boxed frame, set up for V8, N.O.S. door handles, window cranks, hood emblems and all rubber window mouldings. Chrome front axle, new front springs and kingpins, Chevy rear end available, no engine, trans, tires, wheels or interior. Asking \$3,500 OBO. (619)440-6105.

FOR SALE: Frame from a '41 Willys Pick-up. Includes front end, steering column & wheel, steering box, clutch and brake assembly, seat frame and gas tank. Make offer or trade for? Mike Dowing, 5385 E. Harvey, Fresno, CA, 93727. (209)255-4372.

PARTING OUT: '41 & '42 sedans. Body, interior parts, running gear, glass etc. No grilles or headlights. Pete Horvath, 10758 Segovia Way, Rancho Cordova, CA, 95670. (916)635-8320.

FOR SALE: 1 pair 16x11 Halibrands, early Olds'/Pontiac bolt pattern with Goodyear Blue steaks. \$300 plus shipping. Kerry Lundberg. (815)584-1540

FOR SALE: For 1941-42 Willys.
 2 sets body & hood trim, sedan, \$25 per set; 1 set glovebox & blank panel covers, \$35; 3 left & 2 right tail light rims and lens, sedan, \$20 each; 2 sets taillight bulb brackets, sedan, \$5 each; 2 hood latch sets, \$25 each; 2 sets dash trim & Americar plaques, \$35 set; 1 set seat tracks, sedan, \$25; 3 lic' plate lights, sedan, \$12 each; 1 set bumper guards, lft rt & center for '42 sedan, \$40 set; 1 '42 front bumper, sedan, \$25; 2 '42 rear bumpers, sedan, 1 @ \$25 & 1 @ \$15; 1 '40-'42 trunk latch, \$12; 2 rear lic' plate brkts, sedan, \$15 each; Americar hood trim, dented, \$20; 2 hood sliding braces, \$10 each; 1 set trunk hinges, sedan, mint, \$40 set; 1 set trunk slid-

ing braces, sedan, \$10 set; 3 door dovetails, \$5 each; 1 '42 instrument gauge panel with speedo, complete, \$30; trunk handle, sedan, \$15; 1937 instrument panel with all gauges, speedo, sheet metal, light switch, light socket, instrument switch etc, \$50. Dexter Bennett, 908 Fontana Ct, Modesto, CA, 95355. (209)577-5050 Days (209)529-3974 Nights.

FOR SALE: '41 Sedan. Parting out. N.O.S. tube axle with '54 Chevy spindles, complete, \$350. Gaskets for intake/exhaust for orig' 4 cyl motor, \$3.50 each or 5 for \$15.

WANTED: '41 coupe & parts, trim, headlight glass, gas tank, lic' plate light, bumper guards, trunk handle, window mouldings, bumpers and brkts. Also '33-'42 cars, trucks, parts. Stan Fuller, 25 Brompton Ave, San Francisco, CA, 94131. (415)239-2387.

WANTED: Trunk supports for '37-'42 coupe. Bill Reed. (716)948-9703.

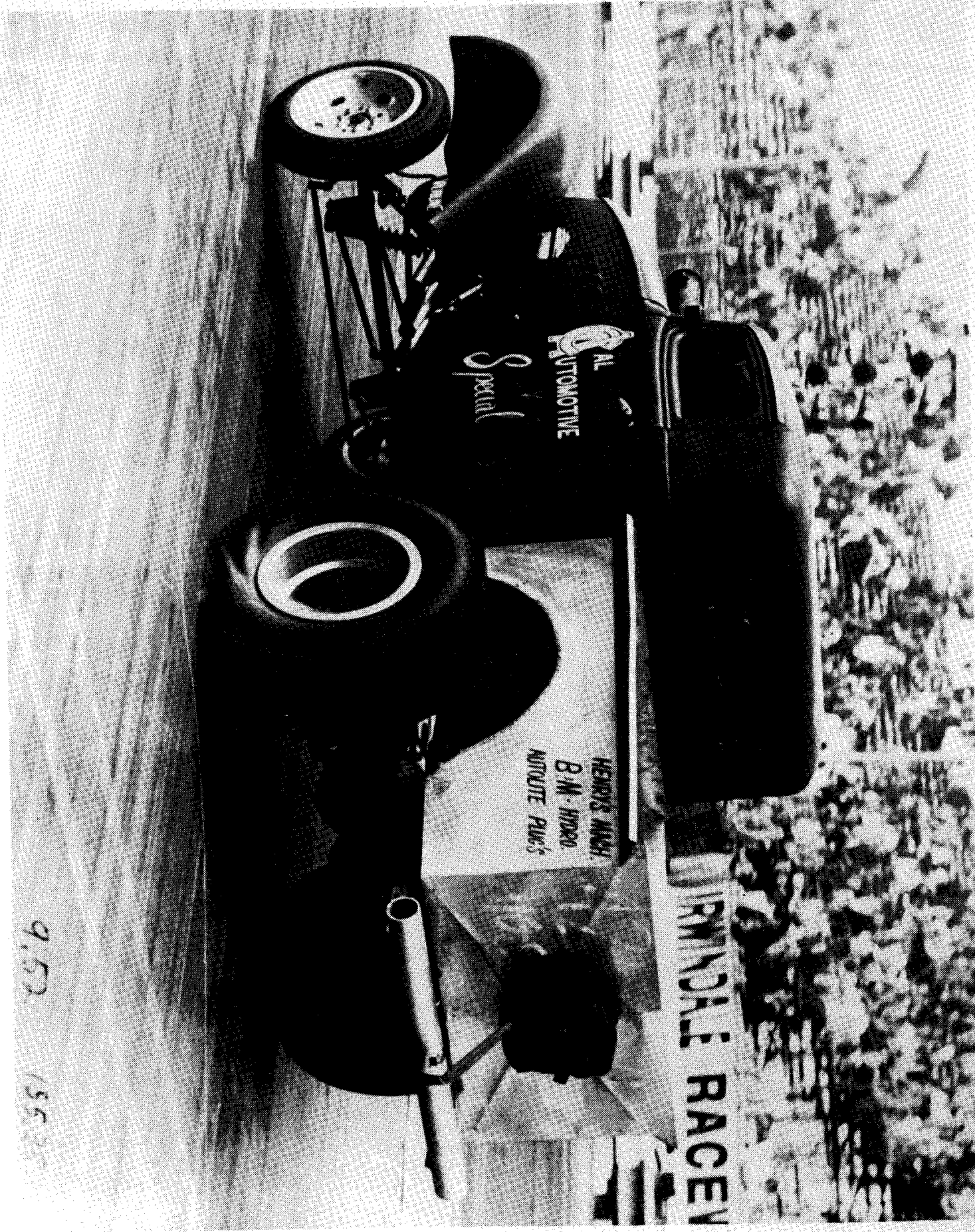
WANTED: '40-'41 coupe or sedan. Must be complete and original, restored OK. Keith Harvie, PO box-1233, Agoura, CA, 91301. (818)706-3834.

WANTED: 1 pair of steel rear fenders for '37-'42 coupe. Prefer uncut with no rust. Gary Ratcliff, 4302 E. Pine Place, Tulsa, OK, 74115. (918)832-1282.

WANTED: Steel '33-'42 coupe less engine. Trevor Gifford, 19 Vanguard Dr, Christchurch 4, New Zealand.

WANTED: 31 spline spider gears for '57-'62 Olds' posi' rear end or will buy 31 spline posi' 3rd member for same. Kevin, 222 San Clemente, Ventura, CA, 93001.

WANTED: For 1941 Willys Pick-up. Steering arm/pittman arm. Ball must be in good shape, not overly egg-shaped or oval; overdrive throttle momentary "kill switch" on cylinder head; overdrive control knob, cable, bracket; overdrive solenoid on overdrive case; overdrive case support bracket (not standard trans' mount); cigar lighter, need male insert with correct plastic knob; clock; antenna. This is all I need for my 100% restoration, please help me out. Dexter Bennett, 908 Fontana Ct, Modesto, CA, 95355. (209)577-5050 days, (209)529-3974 nights.



CAL
AUTOMOTIVE
Special

HENRY'S MACH
B.M. HYDRO
ROUTE PUC'S

IRINDALE RACEWAY

9.50 155