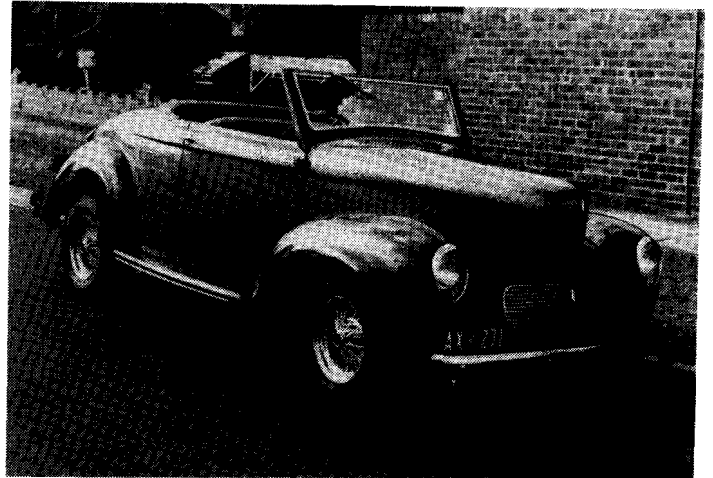
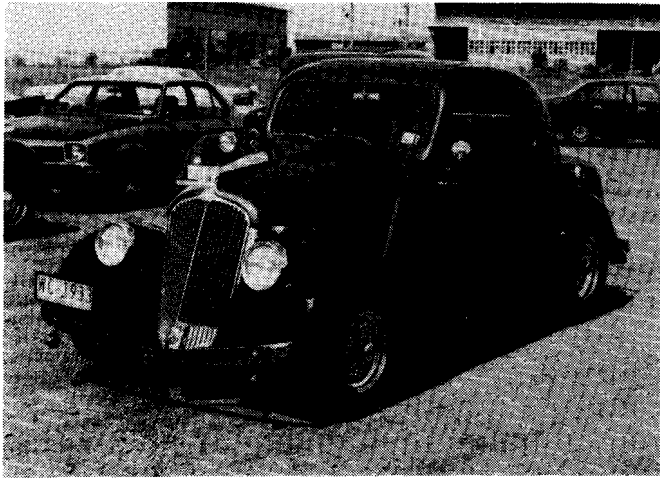
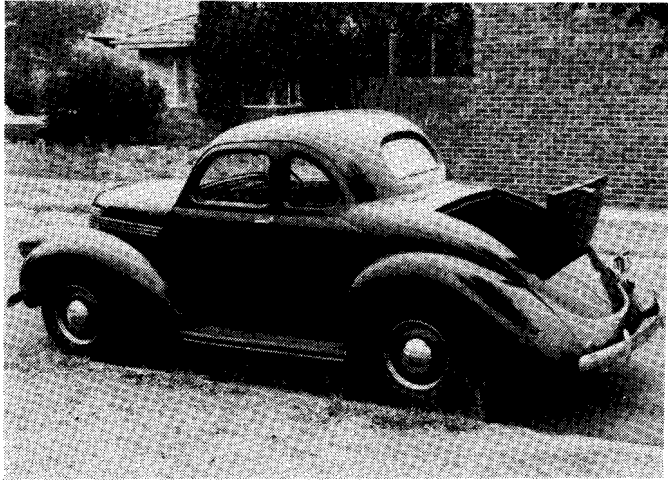


WILLYS Words

APRIL/MAY #5



OFFICIAL PUBLICATION OF THE.....

West Coast

WILLYS Club.

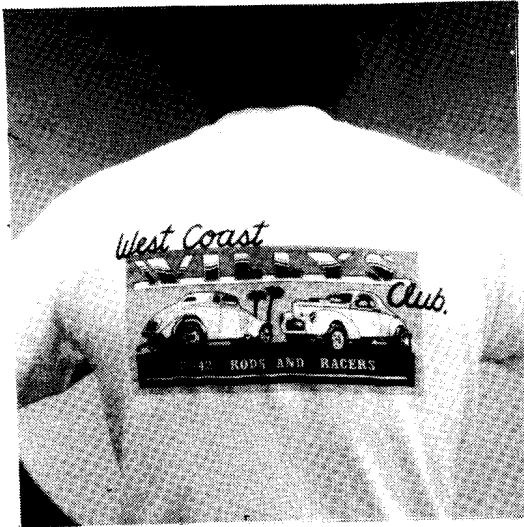


33-42 RODS AND RACERS

5073 SAN JUAN PL-SANTA BARBARA-CA-93111

LARRY KRIDER
659 PARADISO AVE
SPRING VALLEY CA
92077

CLUB GOODIES



WEAR IT WITH PRIDE!!

The official W.C.W.C. T shirt. This full-color, high quality (100% cotton) shirt is available in S,M,L&XL.

Get yours by sending \$10.00 to.....

W.C.W.C.
5073 San Juan Pl
Santa Barbara CA
93111

PRICE INCLUDES
SHIPPING !

Don't forget to state
size when ordering!



Club caps are red and white with club logo
printed in black.

\$6.00 each, price includes shipping.

COVER --

TOP LEFT: A '37 5-window coupe? Yes but only in Australia, body is by "T J Richards" and has the same windshield and doors as US sedans.

TOP RIGHT: This '40 coupe shows the '37-'41 "Holden" coupe body, note windshield 3" higher than US bodies.

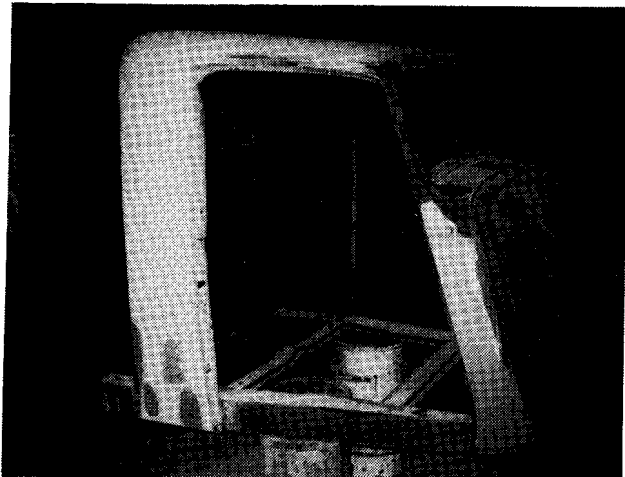
BOTTOM RIGHT: This '40 roadster now resides in Ohio. Willys roadsters (Holden Body), are thought to have last been released in 1937 so car is possibly a 1937 with 1940 front sheetmetal.

BOTTOM LEFT: This '33 3-window coupe, (T J Richards body), doesn't resemble US 5-window coupe body at all, alot of wood in this body.

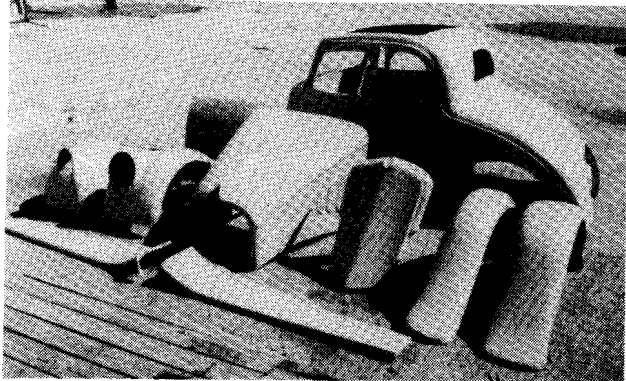
BACK COVER --

The all fiberglass '33 gasser owned by K S Pittman and driven by Harry Hall. This car was built by Chuck Finders, member #1933, back in the 60's. Chuck built alot of the well known gassers and still spends every day building Willys. He currently owns the old Cal Automotive molds that this body came from and has them back in use. See "CLUB CARS". Harry is currently building a replica of this car using a body and chassis from Chuck.

LETTERS



ABOVE: The body used to make the new molds.
BELOW: Chuck sells coupe bodys and parts also.



Here is a picture of the 1933 Willys pick-up body we used to make our new molds from, for fiberglass bodies. The bodies are available now and we are currently taking orders for them.

Jeannie Finders
Chuck Finders Engineering
675 Oberlin Rd
Elyria OH
44035
(216)323-1933

I hear Chuck and his crew have put alot of thought and time into the new '33 pickup body to come up with a first class product. It is great to see another hard to find body made available. Chuck has a very extensive line of parts for Willys, '33-'42. He can be reached at the above address.

KP.



I was a drag racer from 1963-1970 and had several dragsters from X to AA/Fuel but I always loved the Willys gassers. When I got into street rodding in the eighties I decided to build a Willys. I wanted a coupe but somehow ended up building a panel with a Sheffler 'glass body and a frame of rectangular 2"x3" tubing. I kept it for 2 years and sold it to Carson Worth Holt. I started the coupe (see Club Cars this issue) about one year later. I wanted to make it different than all the other Willys I had seen but still keep the racer look. After countless hours of bodywork it is beginning to take shape. Modifications to the 'glass body include 2" chopped top, hidden door and deck hinges, filled hood louvers, smoothed hood top, black plexiglass hood and headlight covers and molded and widened rear fenders. The car is lacking only paint, upholstery, wiring and a little misc' work to be done, as you can see by the pictures the chassis is quite complete and ready to go. I enjoyed my first issue of "WILLYS WORDS" and hope to be an active member in the club.

Bill Robinson #249
Lysander NY

TO JOIN Are you reading a buddies copy?
Get your own by joining the W.C.W.C. Dues are
\$25.00 per year
W.C.W.C.-5073 SAN JUAN PL-SANTA BARBARA-CA-93111

I recently got to watch some videos that I'm sure will be of interest to many members, I'm talking about the 5 tape set - "History Of Drag Racing". These tapes cover 20 years of racing, all filmed in 8mm in the North East. There are plenty of Willys on these tapes including some big name cars involved in some good match'race action. You will also see the evolution of the Funny Car, early Pro-Stocks, many Anglias and much more! Ross Martin, member #284 and writer for NDRA Drag News is the guy behind these tapes, see his ad' in this issue!

KP

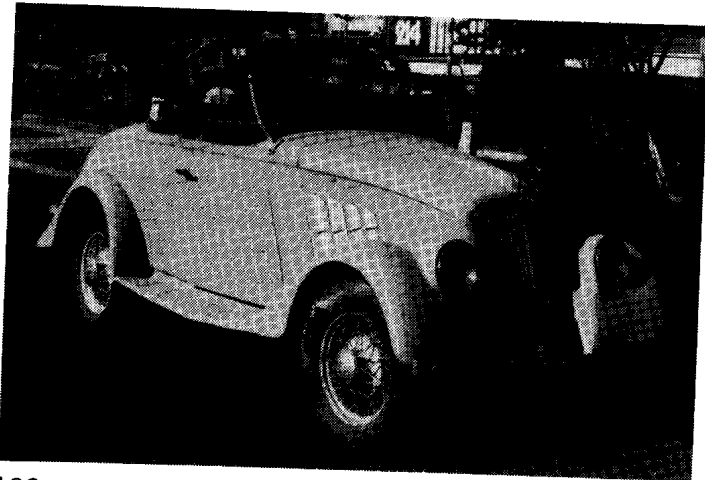
WILLYS DOWN UNDER



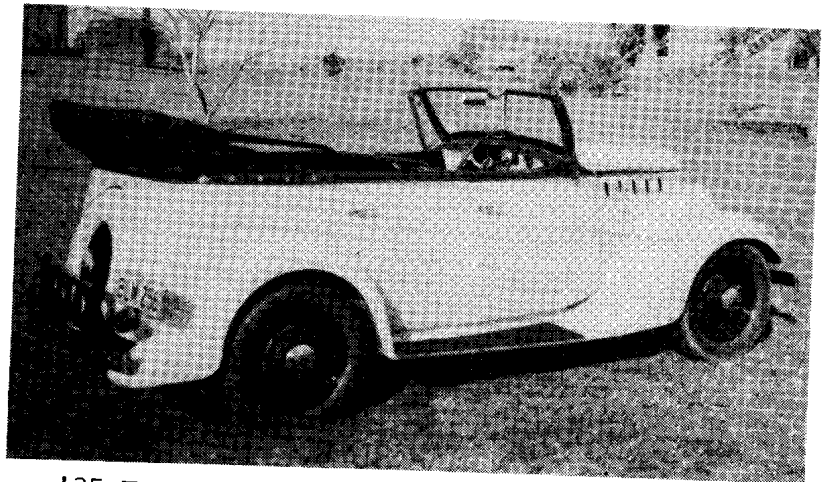
Pick-ups without separate beds are known as "Ute's", short for Utility. Not much is known about this '33 roadster Ute except that it was factory built.

You may not recognize the bodies on this issues four cover cars, that's because they were only ever released in Australia. Thanks to Peter Eames, member #203, from Preston, Australia, we get to take a look at the Willys body styles unique to the land of the Kangaroo. The front sheetmetal was the same as American Willys, chassis'

were the same but had right hand steering. Bodies were made by Australian body building companies, either "T J Richards" or "Holden". No American bodied Willys were available in Australia. Most Australians consider the American bodies more desirable.



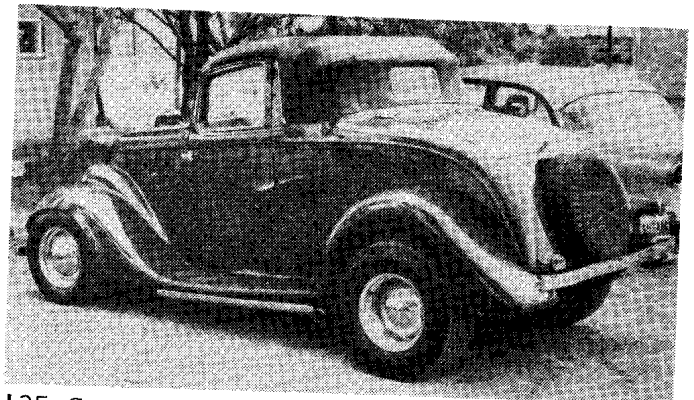
'33 Roadster manufactured by "T J Richards", this desirable car has since been imported into the States.



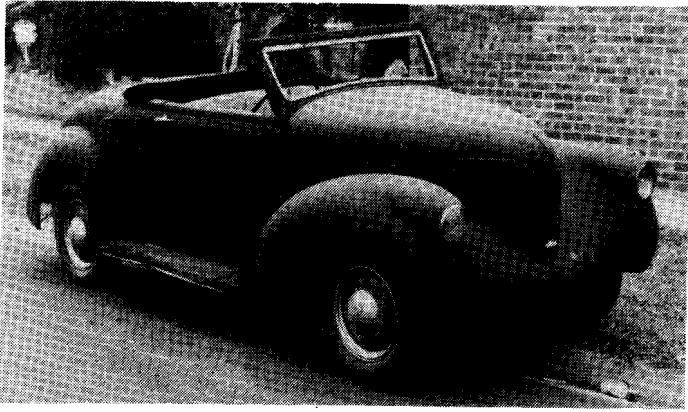
'35 Tourer is a classic looking car, note right hand drive.



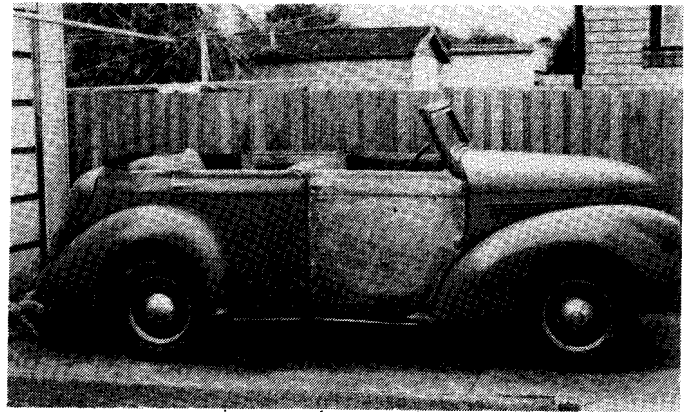
'35 Roadster is another Australian Willys that has found its way to the USA, owner is John Kostelnik, member #131 of Berea OH.



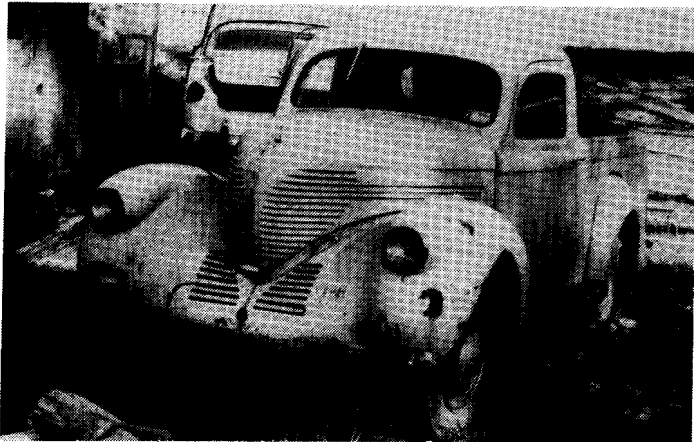
'35 Sport coupe, (very rare), had half fabric top. Body had alot of wood making it difficult to restore if wood is rotted.



'37 Roadster, very few of these were produced.



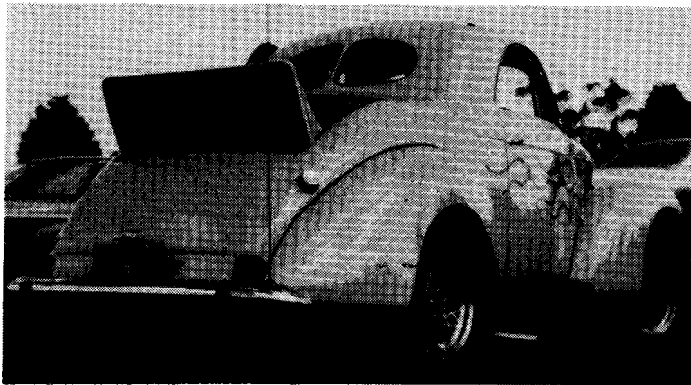
'37 "T J Richards" touring.



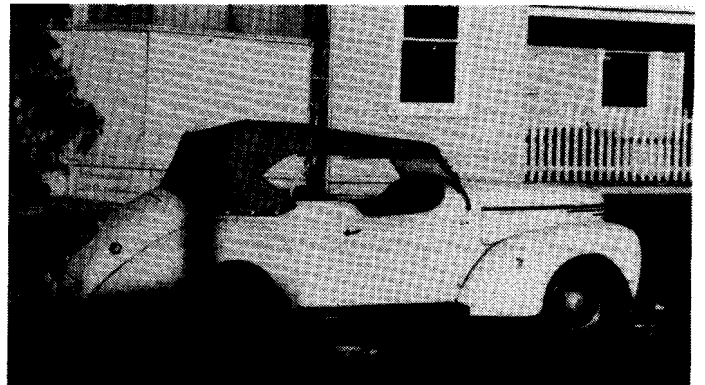
"T J Richards" '37 Ute had U.S. doors and windshield.



"Holden" bodied '37 Ute was based on their coupe body, had sloping roof, wing windows and split rear window.



'39 "Holden" bodied coupe, very different from U.S. coupes, all Aussie coupes had rumble seats.



This sporty looking tourer body was made by a private company, "Floods Body Builders" from 1937-41. Very hard to find one in good shape due to amount of wood in body.

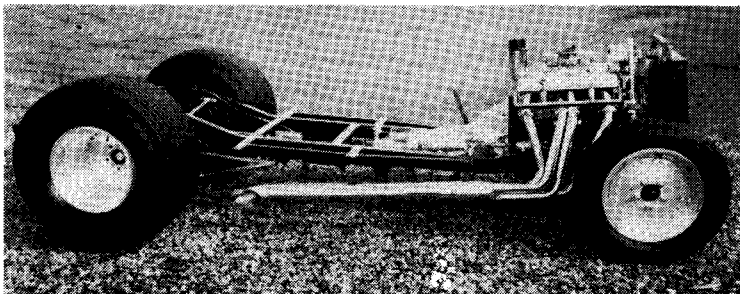


'37-'41 sedan bodies were completely different from U.S. models.



Factory '40 panel would make a great rod!

CLUB CARS



WILLIAM ROBINSON #249
LYSANDER NY

Here's a little car that has a lot of neat tricks not noticeable at first glance. Hidden door and trunk hinges, filled top, moulded rear license plate mount, smooth hood sides and top. The body is a Sheffler Enterprises 'glass item. Chassis is by Martz Engineering with some modifications. 350 Chevy features Crane cam, solid lifters and Vertex magneto. Polished Turbo 400 is trick inside and out. Rear end is narrowed 9", nodular third member carries 4:11 gears.

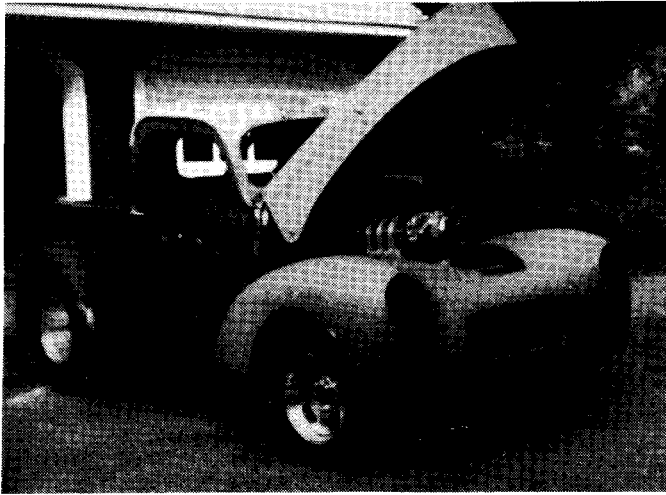
RICHARD LIST #266
BERGEN NY

This is the way Richard's car looked when he purchased it. It is currently getting a tube frame with 12 point rollcage, strut front end with rack & pinion steering, narrowed rear end with ladder bars etc. Engine will be big block Chevy with dual quad tunnel ram. Car has 'glass deck lid, doors, rear fenders and one piece lift off/tilt front end. This '41 will see both street and strip duty.



JEANNIE FINDERS
ELYRIA OH

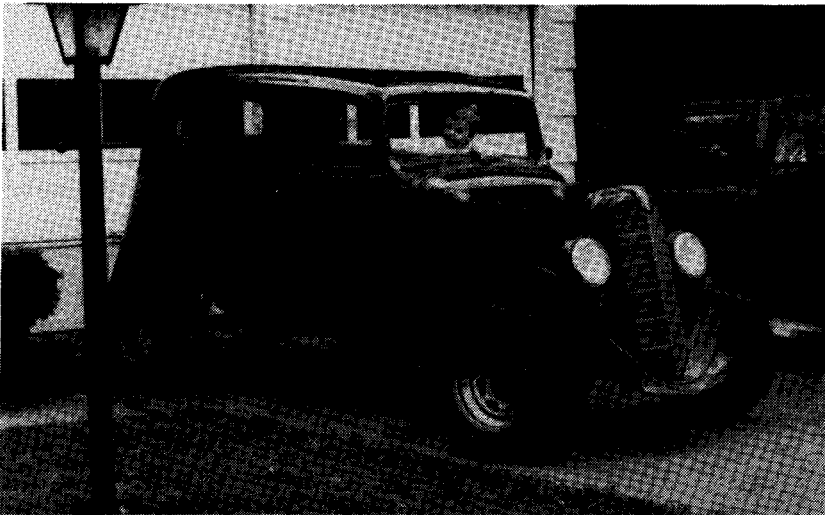
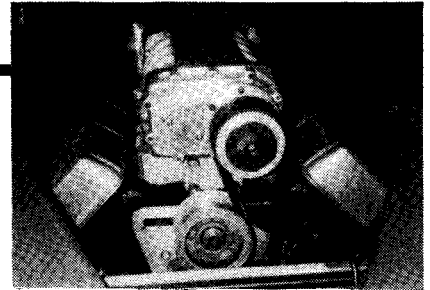
Jeannie is the wife of Chuck Finders whose '33 coupe is seen at right. Jeannie's '33 Sedan Delivery is powered by a Chevy small block and must ride nice with its Jag' rear end and Mustang II front suspension.



RICK SCHAUERTE #149
SHARON MA

When it comes to the drive train Rick is a Mopar man all the way so his Willys just happens to

have a blown 392 Hemi, (an engine that powered Frank Clonaries 1970 Top Fuel dragster), 1965 Dodge/Winters Clutcheflite transmission and narrowed 8 3/4" Chrysler rear end. Hood operates with hydraulic lifts. Wheels are American slots. Steel body and 'gass front end will get dark blue paint job when the body work is completed.

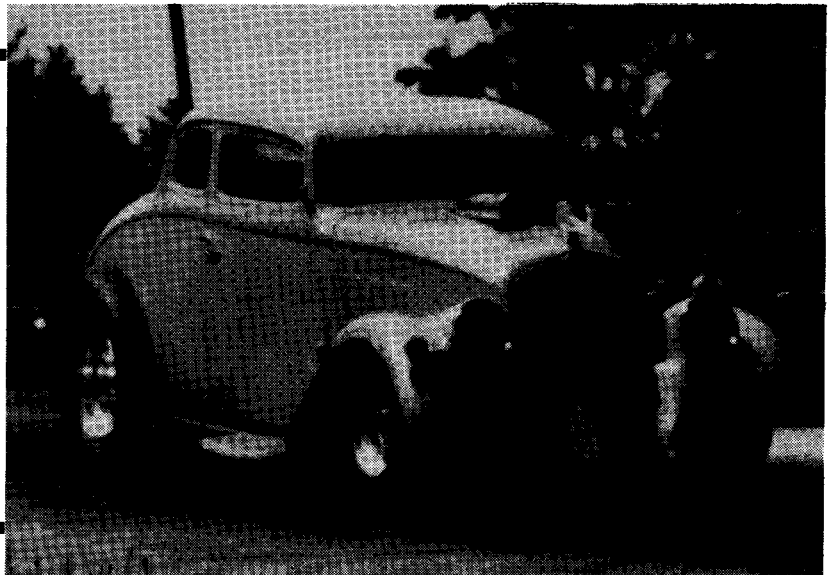


WILLIAM NEEL #295
BEAUMONT TX

Williams' '36 4-dr is nearing completion. Buick V6 and Buick Turbo-350 tranny lead to '67 Cougar rear end. Porsche Guards red paint was applied by the owner. Chassis is boxed and features Opel GT front end. That's William's son Jason inside the car, looks like he's just the guy to take care of the under the dash board wiring.

CHUCK FINDERS #1933
ELYRIA OH

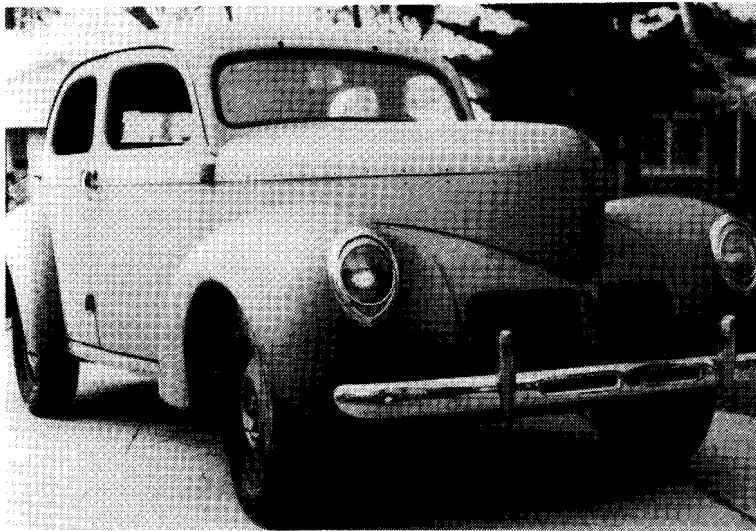
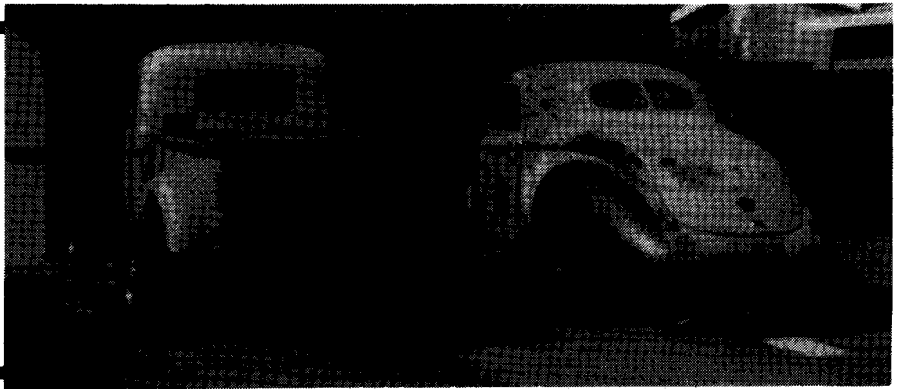
Chuck builds Willys cars for a living so naturally he has a nasty one of his own. The body on this car is the first one out of the molds since Chuck bought them from Cal Automotive. car has a round tube frame, blown/injected Chrysler Hemi engine, B&M transmission and 35" wide 9" rear end with Strange axles. This Willys is race only!





**BILL COMSTOCK #20
SALINAS CA**

Bill owns the '41 coupe, that's his brothers pick-up in the picture. The coupe now has a 2"x3" tube frame and narrowed 9" rear end. 461" big-block Chevy engine has forged crank, TRW pistons, Comp' cam, roller rockers and much more. Bill plans to make the car run 10.50's in street trim, should be a fun ride!



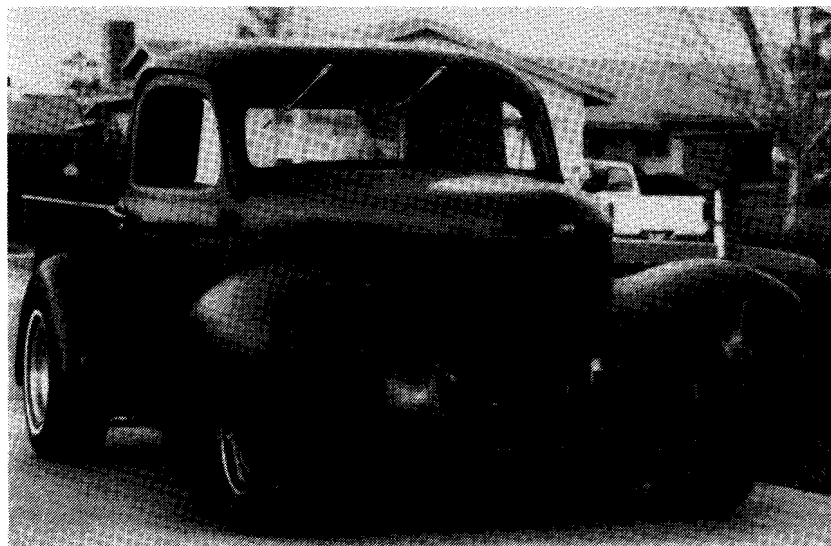
**TERRY AXTMANN #188
VENTURA CA**

Terry paid \$1200 for this 1940 sedan and is now in the process of restoring it back to original. The body is almost perfect but the interior is in need of a lot of work. An all stock Willys is a rare thing these days, a good investment for sure.



**MIKE LACKEY #271
TUPELO MS**

This '41 coupe is an old drag car now seeing street duty. Car was once raced under the name of "The Wizard" by Tom Akers, Tom currently campaigns an alcohol funny car of the same name. Coupe looks great even in primer and has the classic nose high stance.

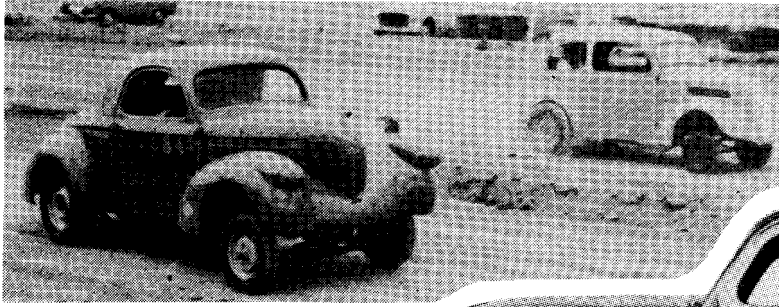


**BRAD SORENSEN #250
CLOVIS CA**

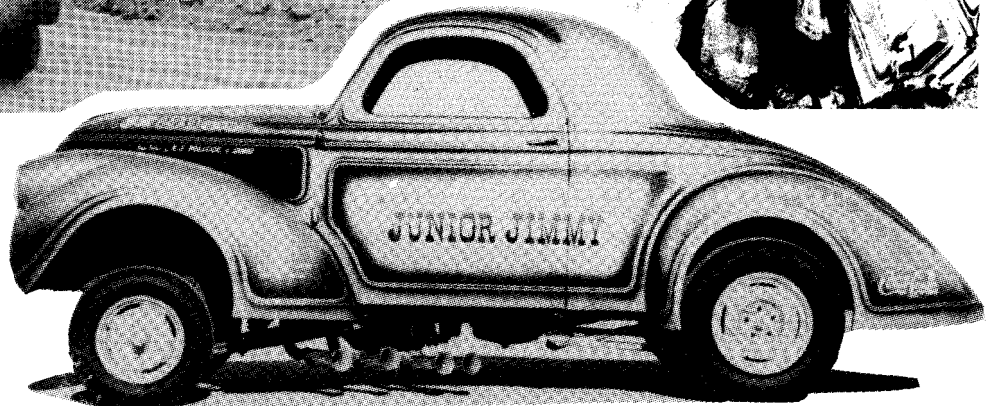
Brad has owned this truck for 15 years, it is currently undergoing its second rebuild. In-the-weeds stance comes from a 4" dropped tube axle, Vega cross steering is used. Engine is a basically stock Ford 289, tranny is a C-4 that will be getting a shift kit. Rear end is a Ford 8" from a '73 Maverick mounted with 4-bars and coil-overs. McClean wheels will have baby moon caps and beauty rings, Michelin tires will be used all 'round.

WILLYS DOWN UNDER CONTINUED.....

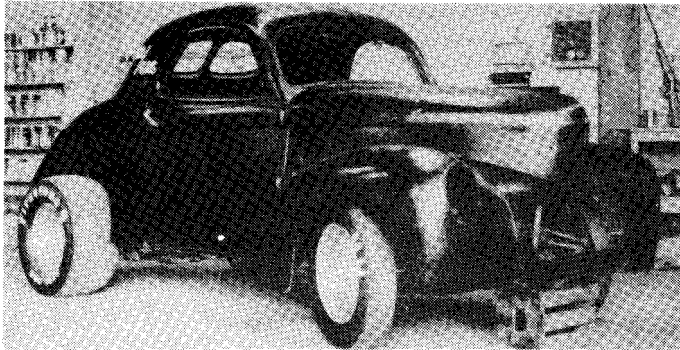
New Zealand



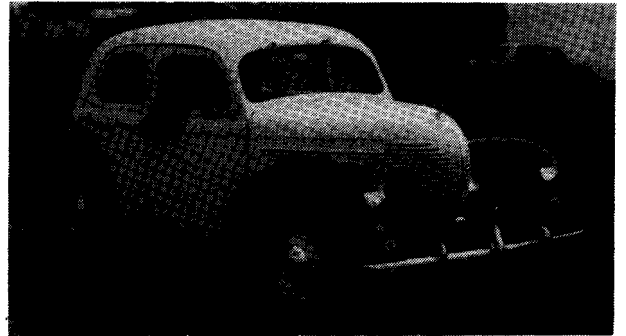
New Zealand is a country of 3½ million people, 1500 miles across the pacific from Australia. New Zealand received American bodied Willys but not many. Fords, Chevys etc outnumbered them 20-1 so they are very hard to find now. Many were destroyed when raced as stock cars in the old days.



This '37 coupe from the early days of NZ drag racing ran a GMC 6 cyl' powerplant. Body was accidentally destroyed by an incompetent bulldozer driver.



This '40 coupe is being built into a drag car by Tony Rattie, member #315 of Auckland, NZ.



Sedans are a little more common than coupes, note American bodies but right hand drive.

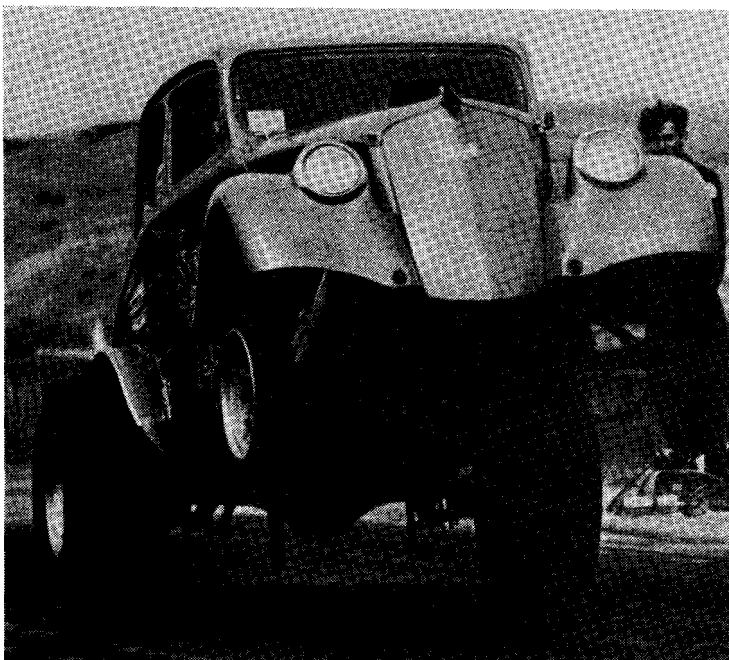
'35 coupe is a very rare car indeed in New Zealand.



WILD WHEELIES

WILD WHEELIES

WILD WHEELIES



WILD WHEELIES

CARS - TRUCKS
PARTS - LITERATURE

BOUGHT - SOLD
TRADED



The Willys Mann '33 to '42

(215) 584-1665
WEEKNITES & WEEKENDS

RON LADLEY
1850 Valley Forge Rd.
Lansdale, PA 19446

I have the largest inventory of 1933-1942 Willys vehicles, parts and literature available in the country!!! Loads of N.O.S., repro and used parts in stock at all times. Loads of sales catalogs, owners manuals, parts books, repair manuals etc. Send S.A.S.E. for free list of parts available. Literature requests please call with your list of needs. I also have cars and trucks available at all times.

RON LADLEY (215) 584-1665



TOP QUALITY FIBERGLASS SINCE 1963

1933-'36 and 1937-'42 WILLYS

Hoods, Grille Panels, Fenders, Trunk Lids,
Window Moldings and More

—SEND \$3.00 U.S. FOR CATALOG—

1-301-796-4382
Fiberglass Bodies and Parts
for Street Rods and Racers

ANDERSON INDUSTRIES, INC.
6599 I Washington Blvd.
Elkridge, MD 21227



LIMITED EDITION STERLING
SILVER WILLYS... \$20.00
KEYCHAINS \$22.00
PENDANTS WITH CHAIN

YOUR WILLY WORKS DEALER FOR 1940-41 COUPES AND CHASSIS.

BOX 2815 • SYRACUSE, N.Y. 13220
(315) 623-9861

1933 Willys Panel Truck & Coupe
All Fiberglass

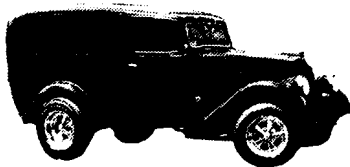


Sheffler
Ent.

Complete with floor pan and
firewall installed, 1 piece front
end, rear fenders, deck lid, door
hinges and window molding.
Finished in black gelcoat.
Coupe-\$3995
Panel Truck-\$4495
FOB Pittsburgh, PA
Brochure-\$3.50

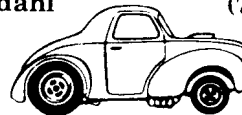
9015 Huron Avenue
Pittsburgh Pa. 15237
Phone 412 653-2250
Mon to Fri. 1 till 7

ASK FOR BOB

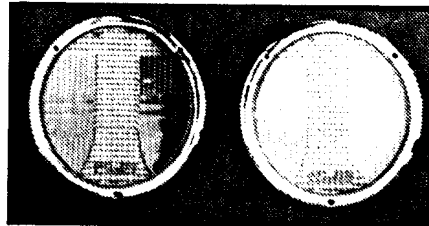


Mike Nordahl

(714) 980-3022



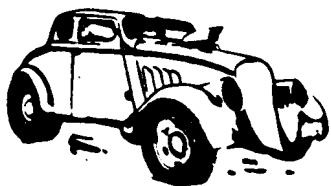
WILLYS REPLACEMENT PARTS



One of our New products
33-36 Headlight Bezel Rings & Lenses.
Chromed & ready to install \$225.00 pair

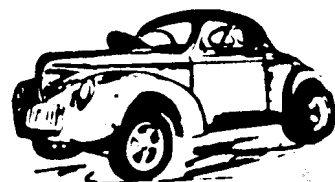
1933 '36 GRILLES
1940 '42 GRILLES
1933 '36 HEADLIGHT LENSES
1940 '42 HEADLIGHT LENSES
1933 '36 HEADLIGHT RINGS
1940 '42 HEADLIGHT RINGS
1939 '42 TAILLIGHT LENSES
"WILLYS" SCRIPT EMBLEMS

5575 Crooked Creek Drive • Alta Loma, CA 91701



QUARTER MILE NOSTALGIA
Looking Back At Drag Racing History

- 10 HOURS of the SIGHTS & SOUNDS of DRAG RACING on 5 VIDEO TAPES
- Available in both VHS and Beta
- 11 DRAG STRIPS - Mohawk, Toronto Int'l, Dragway Park, Niagara, St. Thomas, Windsor, Detroit, Tri-City, Milan, National Trail, Raceway Park.
- VIDEO #1 (1959-1968), VIDEO #2 (1969-1971), VIDEO #3 (1971-1972), VIDEO #4 (1972-1974), VIDEO #5 (1974-1978 & NOSTALGIA RACING).



Drag Racing:
Video Tapes
Photographs
Articles
Memorabilia

- Set of 5 tapes - \$200 (\$175 U.S.) plus \$5 postage/handling
- Single tape----- \$50 (\$40 U.S.) plus \$2 postage/handling
- All tapes sent 1st Class mail.
- Please send certified cheque or money order
Ontario residents 7% Sales Tax.

ROSS MARTIN

(416) 561-2672
P.O. Box 3867
Station "C"
Hamilton, Ont.
L8H 7R6

CLASSIFIEDS



TRADE: 1933 Willys coupe. Body steel, front end 'glass. Small Block Chevy engine, Turbo-400, 10" converter, Olds' rear end, Disc brakes up front, coil-over shocks front and rear, digital gauges, chrome parts. Needs paint and some interior work. I am too tall to drive it, let's trade. Jim, (702)386-9991 or (702)382-9151.

FOR SALE: 1936 Willys model 77 sedan, complete, original, unrestored but mint condition. \$3,500. 1935 Willys pick-up model 77. Cab, Bed, Running Boards, Rear fenders, frame. Rare but needs much work! \$1,500. Doug Gray, (415)831-9653.

FOR SALE: Bare, stock '40 frame, \$100. Bare, stock '42 frame, \$100. '37 4-dr, \$1,000. '37 4-dr, no front clip, \$550.

WANTED: Pair small window front Halibrands. Would like to do some trading for a '33-'36 pick-up cab or unfinished project. Roger Lyle, 4216 S. 37th, Omaha, NB, 68107. (402)733-3490.

FOR SALE: Complete set of steel window mouldings for '37-'42 Willys coupe. \$250. Victor, (805)484-4957.

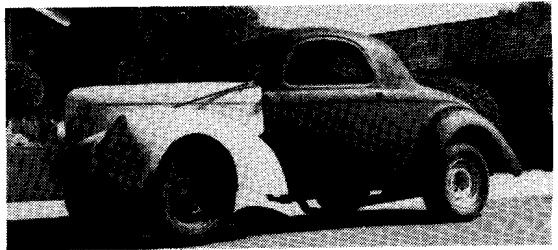
FOR SALE: American 5-spoke spindle-mount wheels, for Anglia spindles, glass beaded. \$275. pair. Tube axles, 4130 material, 1 5/8" O.D.x.250 wall, 3" drop, Anglia king pin bosses, 43 3/4" and 47 1/2" center to center, new. \$100 each.

WANTED: Old racing decals, Logge Stamping Co, Don Garlits (Troy, Mich), Jack Merkel Racing, Woody Gilmore Chassis, or what do you have? Dave, (313)425-9155.

FOR SALE: Willys crankshafts, cams, heads, blocks, carb's, manifolds, transmissions, overdrives, driveshafts, rear-ends, front-axles. Mike Reeves, (619)279-2848. CA.

FOR SALE: 1937-42 Willys body cushion mounts. All 3 types. These are repos from originals. Made of black polyurethane to correct durometer (hardness) as rubber originals. \$5 each for biscuits, \$4 each for both types of flats. 1941-42 choke, lights, starter and hood knobs, polyurethane repos, color of escutcheons, you engrave, \$6 each. 1941-42 windshield wiper knob, you supply brass insert, polyurethane repo, \$5 each. 1941-42 window crank and door handle escutcheons, polyurethane repos, \$5 each. 1941-42 glove box and ash-tray knobs, polyurethane repos, \$5 each. Polyurethane lasts for years unlike rubber and plastic. You pay shipping, limited supply. I have very few left. When I'm out they will not be available again! Don't be disappointed. Dexter Bennett, 908 Fontana Court, Modesto, CA, 95355. Phone-(209)577-5050 days, (209)529-3974 nights.

FOR SALE: 1941 Willys 4-piece fiberglass front end by Fiberglass Trends, brand new, never mounted, cost over \$500, sell for \$250 or trade for coupe parts. Ross, (805)824-4135.



FOR SALE: 1941 Willys coupe. Steel body, doors and rear fenders, 'glass deck-lid and one piece front end. Partially boxed chassis with stock front axle and '57 Olds' rear end (no 3rd member). Car needs firewall, front half of floor and bodywork below trunk lid. Perfect starting point for Nostalgia drag car. Pro-street or street-rod. Body and rolling chassis only, no parts. Best offer over \$2,500. Kevin, (805)967-7345

WANTED: 1940 Willys hood ornament. Roger, (803)877-6842.

WANTED: 1938 N.O.S. or excellent rust free steel left front fender. Also 1937-38 hood ornament. George Wood, Box 228, White Lake, NY, 12786. (914)583-5218.

WANTED: Side Chrome strips for '40-'42 Willys coupe. Ron Fields, 7610 E. Chapman, Orange, CA, 92669. (714)771-8404.

WANTED: 1941 Willys Pick-up frame/chassis, front center piece, rear window moulding, front bumper bracket, 1939 headlight brackets and stainless headlight trim. David Forsyth, 213 Coral, Balboa Island, CA, 92662. (714)675-3742.

WANTED: 8x10 B&W Photos of 60's Willys Gasers, Willys models, toys, slot cars. Also 1/24 & 1/25 scale models of Austins, Anglias, Thames panels, Henry J's, Bantams & '37 Fiats. Frank Calabro Jr, P.O. Box 574, East-Islip, NY, 11730. (516)243-1894.

WANTED: 1940-41 Willys coupe steel doors and steel trunk lid. Frank Cudia, 430 Wright Ave, Morgan Hill, CA, 95037. (408)779-6616.

WANTED: 1940 Willys hood nose chrome. Ken Butler, 4311 Eve Rd, Semi Valley, CA, 93063.

WANTED: For 1941 Willys. Center section, tail-gate hinges, rear window moulding, interior rear-view mirror, interior light lens. Bill Guentzler, 454 Goulburn Ct, El Cajon, CA, 92020.

WANTED: For 1940 Willys coupe. Front bumper with oblong holes, body chrome, metal deck lid and rear fenders. Also want rear window moulding for '41 pick-up. Daniel Walker, 1125 Cottonwood St, Grand Forks, ND, 58201. (701)772-6898.

WANTED: For 1941 Willys coupe. Front and rear bumper brackets, body stainless (all 6 pieces), American hood emblem, pair of rocker panels. Peter Eames, 1 Ruby St, Preston, 3072, Victoria, Australia.

WANTED: For 1941 Willys Pick-up. Overdrive throttle momentary "Kill Switch" on cylinder head, Overdrive control knob, cable bracket, overdrive solenoid on overdrive case, complete cigar lighter assembly, three cowl nameplates, clock, plastic dome light cover, inside rear view mirror, antenna. This is all I need for my 100% restoration, please help me out. Dexter Bennett, 908 Fontana Court, Modesto, CA, 95355. (209)577-5050 days, (209)529-3974 nights.

