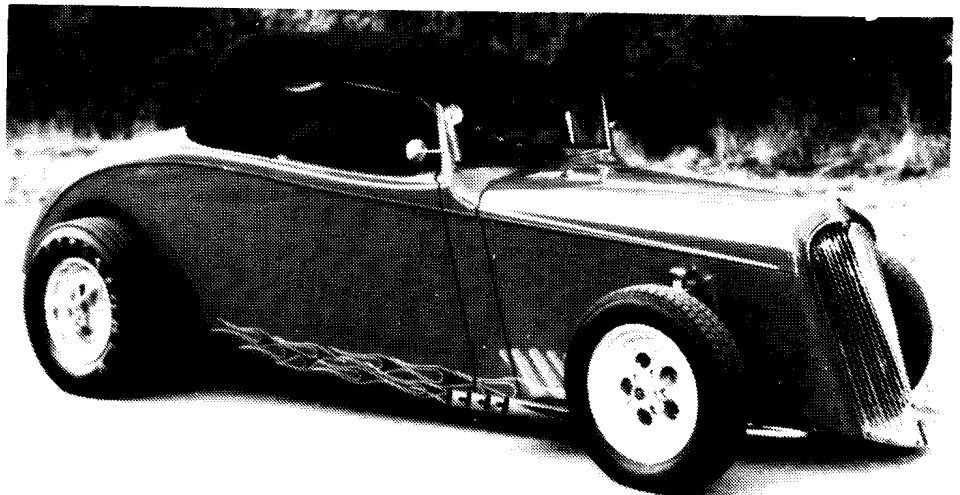
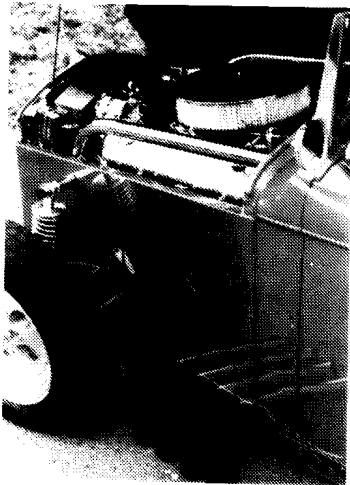
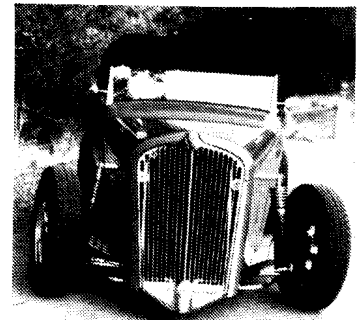
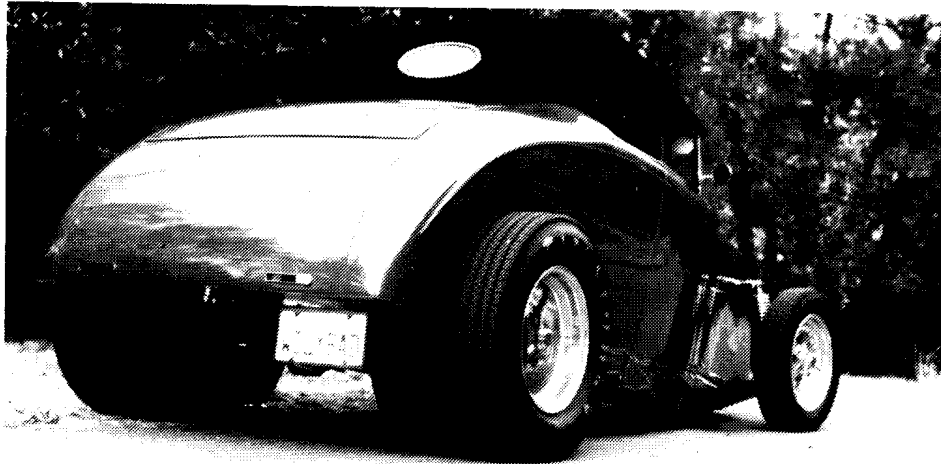


WILLY'S Words

OCT/NOV 88 #14



OFFICIAL PUBLICATION OF THE.....
West Coast

WILLY'S Club.



33-42 RODS AND RACERS

222 SAN CLEMENTE-VENTURA-CA-93001

BULK RATE
U.S. POSTAGE PAID
CAMARILLO, CA 93010
PERMIT #320

047 6/4/86 41C
LARRY KRIDER
659 PARAISO AVE
SPRING VALLEY, CA 92077

West Coast
WILLYS
Club.

GOODIES

JACKETS

SEE DETAILS OF JACKETS
ELSEWHERE IN THIS ISSUE.

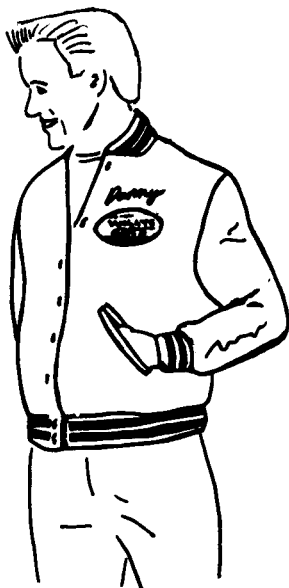
Orders must be paid
100% in advance and
placed before the
end of November.

\$115 each (US funds)
Price includes S&H

Be sure to include
jacket size accord-
ing to chart at
right and additional
payment for extra
long or extra large.

ALLOW ABOUT 10 WEEKS
BEFORE ORDERS ARE SHIPPED.

**222 SAN CLEMENTE-
VENTURA-CA-
93001**



The **first column** is the **ACTUAL BODY MEASUREMENT**, taken with a tape measure, over a relaxed chest . . . just under the arms. The **second column** is the **NUMERICAL GARMENT SIZE**. The **third column** is the measurement, down the back of the garment, from the center of the line where the collar joins the jacket, to the bottom of the waistband. This applies to blouse styles only. The **fourth column** lists the jacket measurement, from the center of the back of the neck, out around outside of a half-bent elbow, to the wrist, at the bottom of the knit cuff, arm parallel to the floor. The **fifth column** lists the measurement of the jacket chest, just beneath the arm-holes.

Specification of jacket				
Chest of Wearer	Suggested jacket size	Length of jacket	Sleeve length	Chest of jacket
23"	4	16½"	19"	30"
25	6	17½"	21	32
26½	8	18½"	23	34
28	10	19½"	25	36
29½	12	20½"	28	38
31½	14	21½"	30	40
33	16	22½"	31½	42
34½	18	23½"	32	44
36	20	24½"	33	46
34	34	25	33½	44
36	36	25	33¾	46
38	38	25½	34	48
40	40	25¾	34¾	50
42	42	26	35	52
44	44	26¼	35½	54
46	46	26½	36¼	56
48	48	26¾	36½	58
50	50	27	36½	60
52	52	27¼	36½	62
54	54	27½	36½	64
56	56	27¾	36¾	66
58	58	28	37	68
60	60	28¼	37½	70

The above are REGULAR SIZES
Please specify jacket size!

X-Shorts are 3" shorter in body and sleeve No Extra Charge.
Shorts are 2" shorter in body and sleeve No Extra Charge.
Longs are 2" longer in body and sleeve 10% Extra Charge.
X-Longs are 4" longer in body and sleeve 20% Extra Charge.
Sizes 48-50 10% Extra Charge.
Sizes 52-54 20% Extra Charge.
Sizes 54-56 30% Extra Charge.
Size 60 40% Extra Charge.

T SHIRTS..... S, M, L, XL & XXL. \$10.00 plus \$1.50 s&h.

RED T-SHIRTS....(LOGO ON FRONT) same sizes and price, state "RED" when -
- ordering!

CAPS..... Red & white w/black logo. \$7.00 plus \$1.50 s&h.

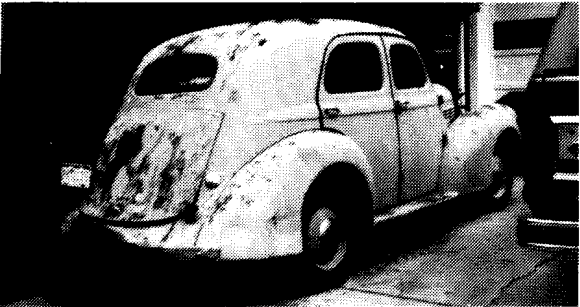
DECALS.....Black & white w/red border & chrome WILLYS. \$1.50 each.

BACK ISSUES..... #1,2 & 6 are photocopies, all others orig'. \$2.50 each.

COVER -- Doug Gray, member #308, of Alamo CA has come up with a really unique Willys' street rod here! The car started out as a steel '36 coupe and ended up a fenderless, channelled low down', '80's style pro-street roadster. The steel top went to fellow member, Jim Tipper to save his rolled coupe, (see issue #6). Doug's Red roadster has mandrel bent 2x3 frame with chrome roll cage,LS-7 454 for power,Turbo 400, narrowed Dana 60, Gray vinyl interior and alot of hand made parts. Look for it in national magazines soon!

BACK COVER -- Jerry Tarvin, #383, of Sacramento, raced this Pro/Gas Tangerine Orange pick-up back in 1974-1977. It was powered by a 426 Hemi with Hilborn injectors and Chrysler 4 speed, truck ran 9.60's at 145mph.

LETTERS



The '37 sedan belongs to my wife, it was purchased as a package deal with my '39. It's a daily driver for her, it needs some work here and there but the price was right. She wants to leave it stock for now.

I want to pass on something that happened to me while I was at the Nat's mentioned above. My inspiration for starting on my car came from a guy that I met there by the name of Ron "Mr C" Coleman from Gold Hill, OR. I struck up a conversation with him while I was admiring his 1940 coupe that he had there. The more I talked with him the more I got the impression that he had been around Willys for a while. It turned out that he used to race with Stone, Woods & Cook, with them, not against them! He admitted that they were Quick! Also, the car that he drove at that time was indeed the car sitting before me. I could have talked to him all day!

Hopefully by the time this goes to print I will at least have the front and rear suspension done on my '39. I have to keep moving on this as there is a second '37 sitting outside that has Pro-Street written all over it!

Bill Robinson #402

I would like to say thanks for a great club and informative newsletter. When I bought my Willys coupe I was told it was a 1940 so that's what I thought I had, I was wrong.

After reading issue #11 of Willys Words I found out my coupe is a '37 with '41 front sheetmetal. Also Willys Words has helped me find many parts I needed for my coupe! Thanks again and keep up the good work.

Ray Olson #115
Erie PA

Thanks Ray for the kind words, I would like to put more informative and technical articles in the club magazine, however they are the most time consuming and there are members out there who are far more knowledgeable than me about Willys facts so what do you guys say? Would someone like to volunteer a story on the difference between the '33-'36 Willys, how about the '37-'39. Come on guys, you may even enjoy it!

KP

Any progress on my Willys project? I had to move it the other day to get to the lawnmower! Does that count? (or sound familiar?)

After attending the NSRA Rocky Mountain Nat's in Pueblo, CO. I have made up my mind that I am not "walking" to another event! I came home that very same day and started work on my '39. After all, I have had this car and all of the necessary pieces to do what I want for almost 2 years now, (why rush into this, right?) My plans are to basically do what everyone else in street rodding is doing to their '32 Fords. IFS, 4 bar rear, 350TH, tilt column etc with one exception, a blown V6 for motor-variation. I am hoping that when it comes time to "place" the engine, that Santa Claus or someone will leave one of the new 4.3L V6's on my doorstep or under my pillow. If not the 231 will suffice. My overall idea is to have a nice, low sitting, dependable driver that just may be quick too.

STUFF & STUFF

I have heard from a couple of reliable sources that Fremont Drag Strip (Baylands) will be closing down at the end of this year!

Chris Smith, #328, whose '33 coupe was on the cover of issue #4 had a bad accident totaling the coupe and was injured. Didn't hear all the details but I, as I'm sure all members wish Chris and family best wishes.

Look for the Stone Woods & Cook Willys coupe on the Mac Tools calendar in '89.

Ross Martin dropped me a line to let me know the correct driver of the "AGITATOR" pick-up seen in last issues "Wild Wheelies" was Paul Day who raced the truck in the late '60's/early '70's. Chuck Finders did race a truck called "AGITATOR" but I guess that was earlier.

Members in the news, Don Toia-Popular Cars, Sept'

1988. Ken Butler-Street Rodder, Sept' 1988. Joe Hrudka-Hot Rod, Oct 1988.

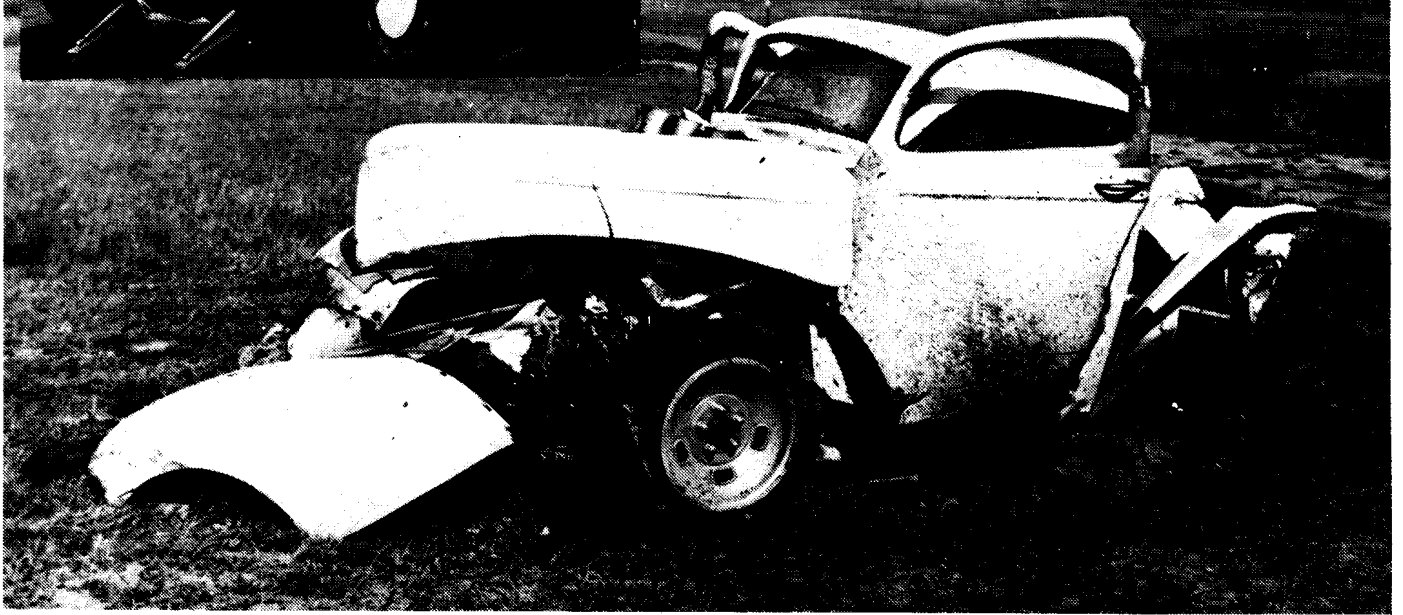
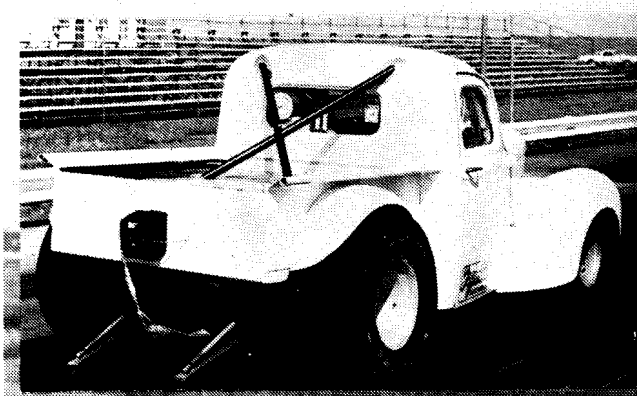
A new club started by W.C.W.C. members Greg Dummer and Bill Halbrehder. It's Called "Mid-America Willys"-18819 Valley Dr, Minnetonka, MN, 55345. They're planning a big get together at the 1989 Street Rod Nat's so get in touch.

Want to race a fuel injected, small block powered B/GAS Willys. A new class for the Nostalgia drags. Get in touch with John Piller, He can send you the rules etc, 486-8749 - Snohomish, WA.

My wonderful wife, Mary and I are expecting our first child in January, somehow I will still find time for the club, even if I have to get up a couple of hours earlier. (What do you mean I'm going to be up early anyway?)

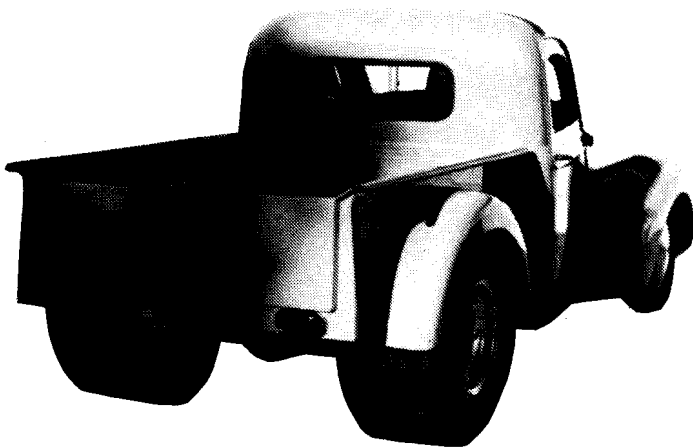
KP.

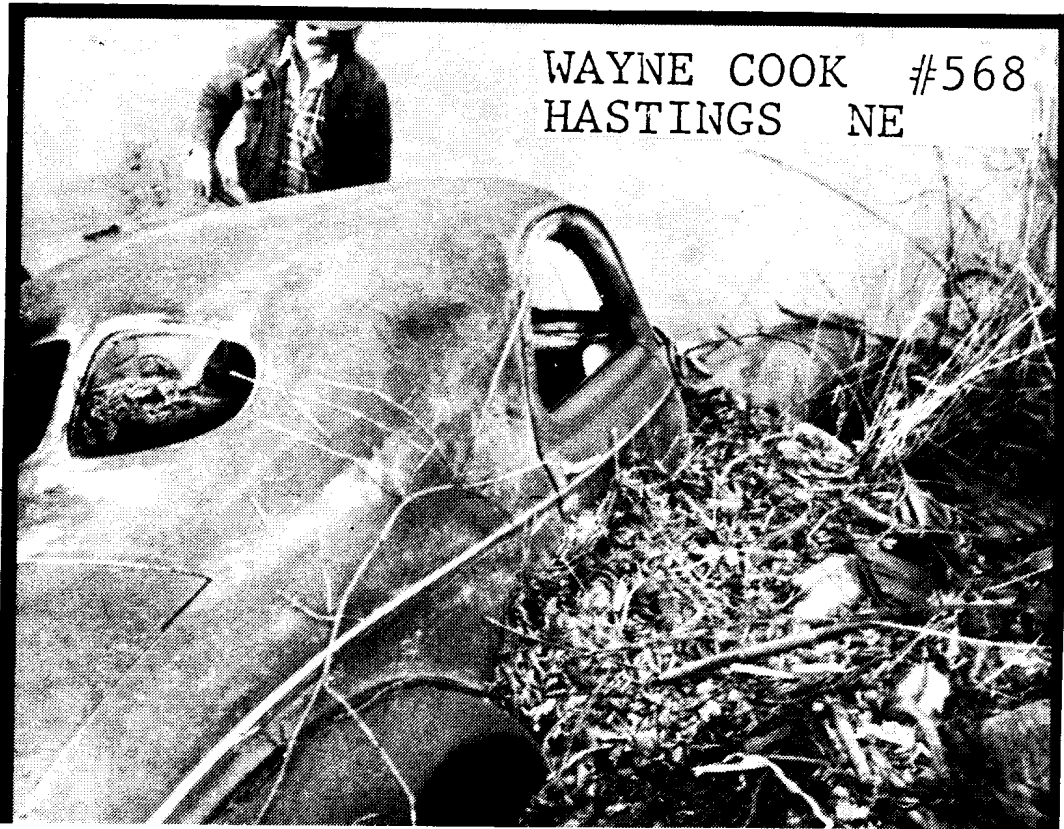
JERRY TARVIN #383
RIO LINDA CA



4-17-77. SACRAMENTO CA. With a brand new pearl white paint job, Jerry was testing his new automatic trans', made a clean run, pulled the chute and all hell broke loose! The parachute lanyards became tangled in the wheelie bar axle at about 140mph. The truck did a couple of endovers then set a new altitude record for a wingless aircraft. After all the dust had settled, Jerry was lucky to get out with a side ache and busted wallet, the truck however was dead.

It's 11 years later now and Jerry has built another pickup, a street replica of his old race truck, proof positive that Willys mania runs thick in Jerry's blood! This new bright yellow version runs 426 Max Wedge Mopar power and in Jerry's own words- "It's a shake and bake Hot Rod, no air conditioning or plush interior, just the way I like it!"





WAYNE COOK #568
HASTINGS NE

FINDERS KEEPERS! About 4 years ago Wayne and his wife were "Tubing" down a river when they spotted about 30 cars imbedded in the river bank. Wayne thought he recognised one as a Willys coupe, he'd built over a dozen models in the past but didn't recognise that 2 piece grille. Anyway, 4 years later after thinking about the coupe alot, Wayne went back with a friend to locate the car in knee high snow.

At first they couldn't find the car and when they did they couldn't find anything to identify it as a Willys, until Wayne crawled in a door window, scraped some mud covered snow off the dash and found the "W" on the speedo. They located

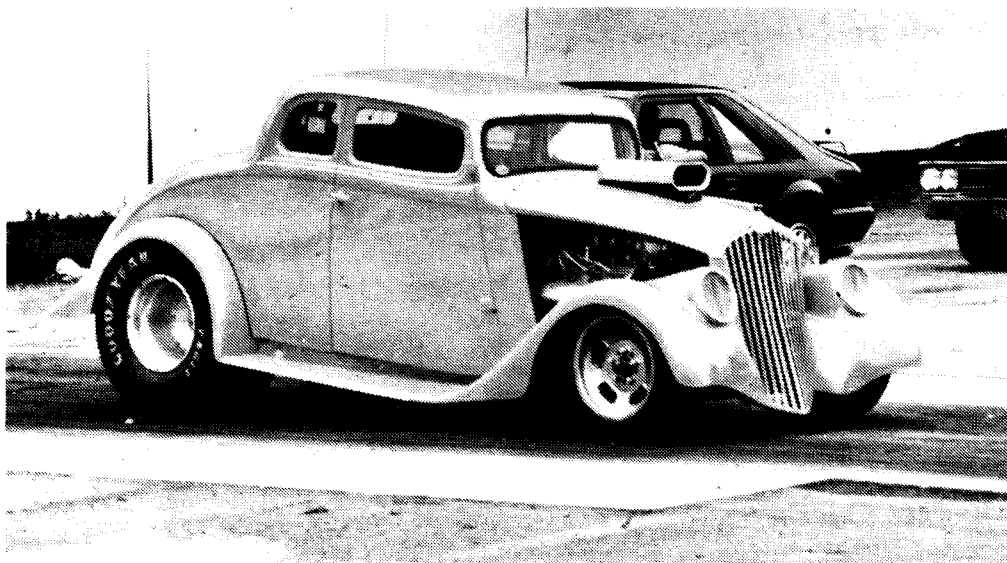
the farmer who owned the land and the farmer said if he wanted to go to the bother of getting it out, he could have it! So back he went with 5 friends and after much digging (the guy in the photo is standing in the river) the coupe was freed from the hands of fate and given a new lease on life.

It had to be rolled up over the edge of the riverbank and the roof came out a little worse for wear, it can be fixed however and Gary now has a shell to start on, oh sure it's rough but the price was right and now he has one. As you guys know, finding one is the hardest part these days. Wayne has already located a frame and some floor parts from a sedan.



Wayne needs a drivers side door and front fender, his fingers are crossed for any leads from fellow members. Phone (402)462-6359. Passenger side sheetmetal was OK.

CLUB CARS

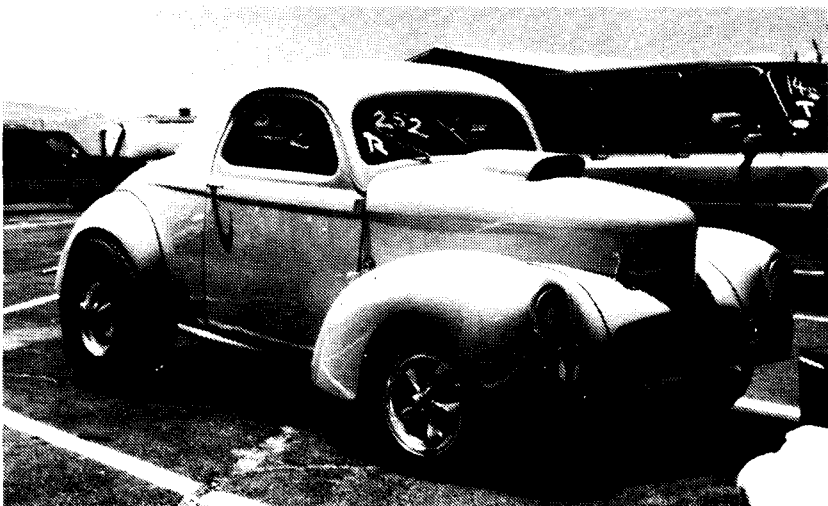
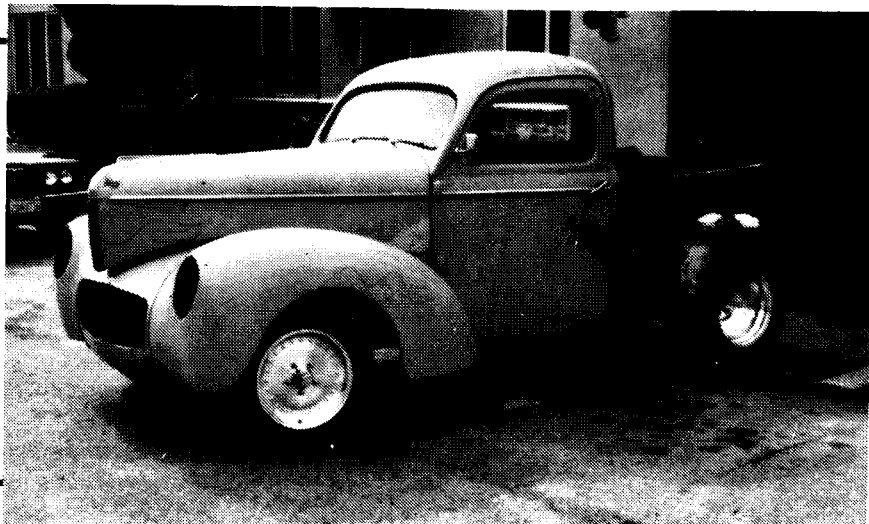


DAVE PEREZ #344
JACKSON NJ

Dave's '33 was built and owned by Chuck Finders. Dave recently purchased it and is now finishing it up. Body is all 'glass and features top chop and open hood sides. Engine is a 6:71 blown 392 Chrysler Hemi. This Yellow terror is one of the baddest looking '33's around!

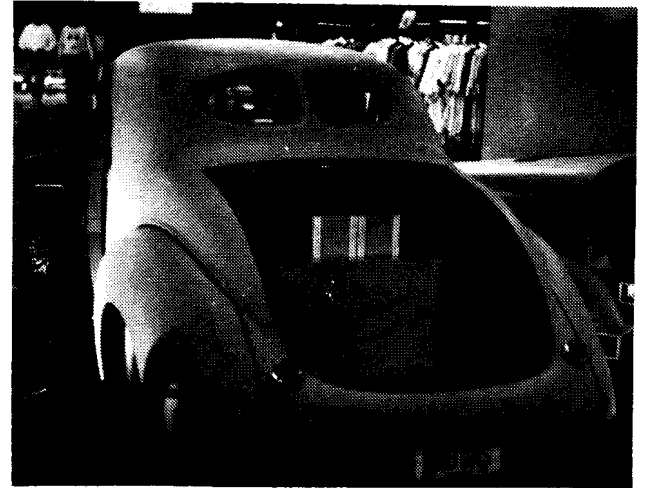
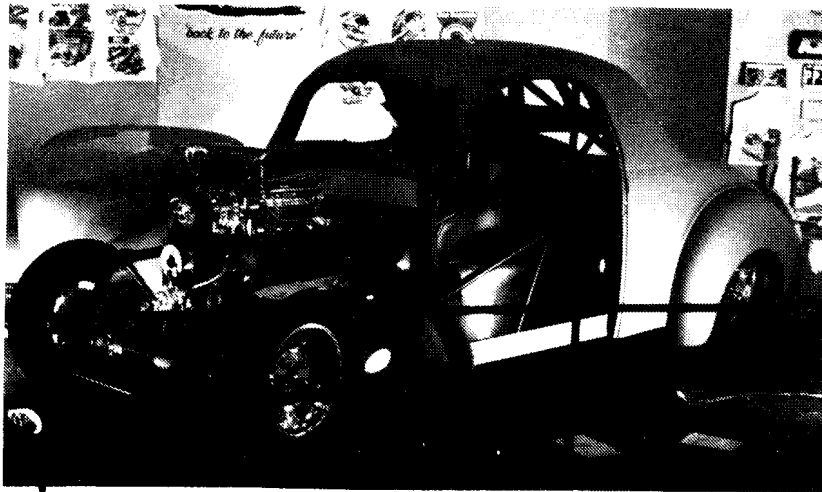
JOHN AZEVEDO #508
HAYWARD CA

John's '41 is all steel and features an 8" shortened bed and 3" widened rear fenders. Chassis is from an '83 Mitsubishi and now features Pinto front suspension and narrowed 10 Bolt Chevy rear end mounted with Aldan coil overs and 4-bars. Engine/Trans is the trusty 350/350 combination. Custom radiator is from the "Willy Works", so far John has only \$3000. invested. When finished, truck will be painted Candy Brandywine.



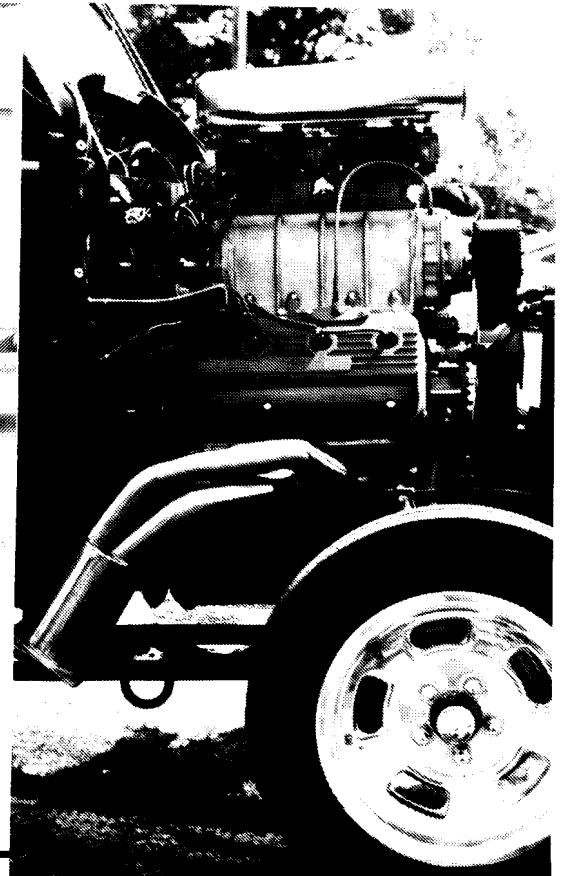
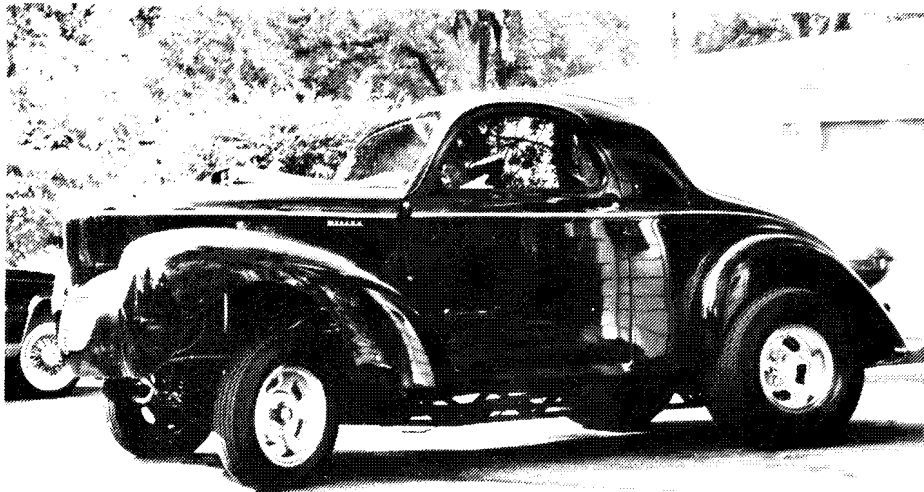
STUART SCHNEIER #573
NORTHRIDGE CA

Like most Willys coupes, Stuart's has a 'glass front end, rear fenders and an Old's rear end. Stock chassis is boxed, tube front axle has Chevy disc brakes. 327 Chevy engine has Fuelie heads and Mallory Ignition. Trans is a turbo 400. Interior features Jaz pro high-back seats, SW gauges, Diest 5 point seat belts, B & M shifter and Cal Custom wheel. Other features are Mustang steering box, 55 Chevy radiator, Hayden electric fan and Yellow enamel paint job.



NORM LONGFIELD #554
 BAULICHAM HILLS NSW AUSTRALIA

Norm's coupe features a tube frame and 'glass body, Norm sells these bodies in Australia and is also a dealer for Willys Replacement Parts. Coupe has strut front end and a 31 spline 9" with full floating axles. Engine is a 510 cubic inch Keith Black nodular iron Hemi that will feature a computer management system same as the top funny cars, etc. use. Car is right hand drive, wheels are Halibrands.



AL SIMONENKO #490
 DEARBORN HEIGHTS MI

You should see this one in color, Candy Apple Red! Al's classic looking coupe has an equally classic looking blown Hemi for power. Rear end is the old familiar 57 Old's on leaf springs with long ladder bars. Stock I beam front axle has disc brakes. Interior has velour covered bucket seats, SW gauges, B & M shifter and T-Bird steering wheel. Polished Halibrands finish it off.



GARY MINTZ #142
EDMONTON ALBERTA CANADA

Gary has been really busy working on his coupe since it first appeared in issue #7. Running gear now consists of a L88 427, Doug Nash 5spd and Dana 60 rear end mounted on leaf springs with Alston Pro-Link ladder bars. Engine mod's include Crower reverse grind gear drive cam, 660 Holleys on Edelbrock tunnel ram and Mallory super mag'. Headers are Hooker fenderwells. '38 coupe now sports steel '40 front sheetmetal. Car also has '65 Fargo pedal ass', stock front axle now has disc brakes.

BILL RITCHOTTE #422
SO. MERDEN CT

Bill is almost on the road with his all 'glass Willy Works '41 replica. 2"X3" chassis is also from the Willy Works and features Pinto independent front suspension, narrowed 9", 4 link, 4 wheel disc brakes and 4:11 traction lock from Currie. Rebuilt 454 has roller rockers, Edelbrock performer and 780 Holley. Transmission is a Turbo 400 with Gennie shifter. Other features are Mickey Thompson tires on Centerlines all around, Total Performance aluminum tilt column, Ron Francis wiring, VDO gauges and 22 gallon fuel cell. Bill wants fellow members to know that "Rod Tin" Ford seat fits real nice and Sanderson big block headers fit inside 25" frame rails.

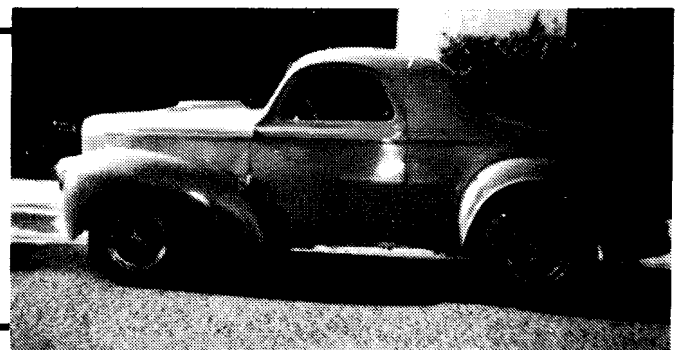


CLAYTON FERNANDEZ #057
EWA BEACH HI

Clayton's brother has just aquired this x-racer pickup. It's all steel except hood. 350 4-bolt main engine is set back 10% and backed up by 4 speed tranny and Old's rear end. Pickup bed is hand made and the top is chopped 1-2 inches. Truck needs some body work, front brakes, emergency brake, grille, headlight rings, intake and carb. The bright yellow "Top Banana" should be running again real soon.

BRUCE GONZALES #564
GLENDALE AZ

Bruce sent in this shot of his 40 coupe, paint color is Yellow with 5 spoke mags painted to match. Body modifications include radiused rear fenders and hood scoop. Bruce's coupe shares the garage with his early 'vette.



JACKETS

Here it is, the official W.C.W.C. jacket. No corners have been cut in making available the highest quality jacket possible. These are not cheap and are being sold at cost (have you priced a Lettermans jacket lately?). The W.C.W.C. jacket is designed with the '60's car-club jackets in mind. The club name is big and bold across the back of the jacket in Chenille, (the same stuff Letterman letters are made of). The jacket is Red 24oz Wool Melton body and sleeves with black & white stripes on the collar, cuffs and waistband. On the front is an embroidered patch of the club logo (same size as the decal) and your name embroidered above it. Picture yourself in this jacket at the next Rod Run or Nostalgia Drags This is is a jacket that will last the rest of your life. Just in time for Winter.

I bet alot of you guys would love to get one for Christmas, well it won't get to you before Christmas but it will arrive shortly after so maybe you could talk your wife, girlfriend or Mother into it. The only way to get one is to send the money in advance as this is the way the club has to place the order, also because each jacket is a custom fit (see ordering info' inside front cover). If you want a club jacket you must order now as it will be a while before another order is placed. Keep in mind that this is a top quality jacket that won't look cheap or fall apart, a true "Car Club" jacket. Orders must be placed before the end of November.

A light-weight, high quality cotton jacket will be made available before next summer.



West Coast



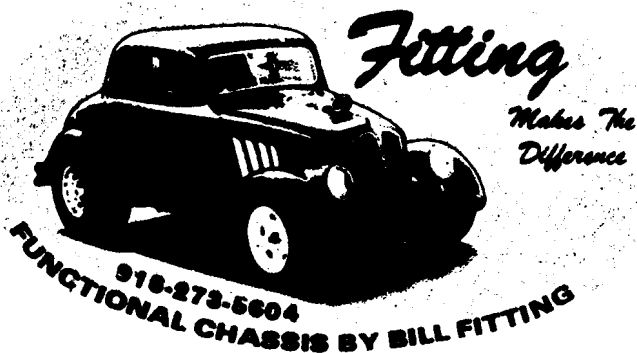
Across the back of the jacket.

Club.

WILD WHEELIES



Jerry Tarvin's pick-up hooks up at Sacramento. Picture was taken not long after 'glass front end was fitted.



THE ULTIMATE VIDEO FOR
WILLYS FANS.....

HOT ROD

The 1979 movie with that
fantastic Willys! Great
racing action!

On VHS video, \$59.95

Factory Authorised and
sealed tape, not a copy!
Add \$3.00 postage.

Send a Large SASE for a giant
catalog of over 500 different
car movies on video, original
theater lobby posters and
other car movie items.

payable to Del Fisher or
Back Issue Car Magazines.

P.O. BOX 170243

ARLINGTON TEXAS

76016



QUALITY REPRODUCTION
1933 - 1942
WILLYS PARTS

NSRA

BLUE KNIGHT ENTERPRISES

BUTCH & ANITA BAILEY
8260 SOUTH FLICK ROAD
TIPP CITY, OHIO 45371
1-513-667-5252

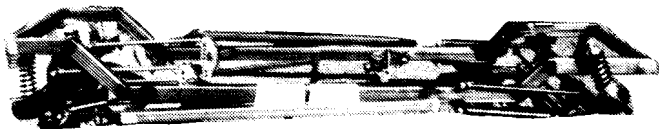
BOUGHT

TRADED

SOLD

AT LAST A QUALITY BUILT PRO-STREET-ROD CHASSIS FOR THE 40-41 WILLYS!

BASED ON A 103" WHEELBASE, THE SPECIALTY CARS WILLYS CHASSIS FEATURES THE
POPULAR FOUR-LINK COIL SHOCK FRONT SUSPENSION AND A FULLY ADJUSTABLE REAR
FOUR-LINK COIL SHOCK REAR SUSPENSION. THE 100% HELL-ARC (TIG) WELDED CHASSIS
WILL ACCEPT ORIGINAL FULL FENDERED BODIES AND ALLOW THE USE OF WIDE REAR
TIRES AND WHEELS SUCH AS THE POPULAR MICKEY THOMPSON 31 x 16.5 LT TIRES
MOUNTED ON 15" x 15" WHEELS.



ORDER BEFORE THE END OF
NOVEMBER AND GET FREE
SHIPPING INSIDE THE USA
AND \$300 OFF LIST PRICE!

WILLYS PRO-STREET-ROD CHASSIS INCLUDES:

- 2" x 3" RECTANGULAR TUBE FRAME
- TUBE AXLE, 2" od. WITH 4 3/4" DROP
- REPRODUCTION FORD SPINDLES
- VEGA STEERING BOX
- THE ROD, DRAG LINK & STEERING ARMS
- 4-LINK SUSPENSION FRONT
- PANHARD BAR FRONT & REAR
- ELIMINATOR SPAX COIL SHOCKS FRONT & REAR
- HEAVY DUTY 4-LINKS, 1" od. x .188 REAR
- ENGINE MOUNTS, SMALL OR BIG BLOCK CHEVY
- TRANSMISSION MOUNT (SPECIFY)
- NARROWED 9" FORD REAR END HOUSING & AXLES
- MASTER CYLINDER & BRAKE PEDAL ASSEMBLY

WILLYS PRO-STREET-ROD CHASSIS OPTIONS:

- CHROME FRONT & REAR SUSPENSIONS
- REAR END 3rd MEMBER, BRAKES & ETC.
- FRONT DISC BRAKES
- POWER BRAKE BOOSTER & MOUNT
- BRAKE LINES INSTALLED
- ROLL CAGE

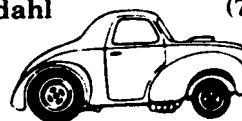
DEALER



(619) 375-4573
MON-FRI 6 PM - 9 PM (PACIFIC)
SAT. 9 AM - 5 PM
747 E. DOLPHIN, RIDGECREST, CA 93555

Mike Nordahl

(714) 980-3022



WILLYS REPLACEMENT PARTS

RUBBER SEAL, WEATHERSTRIP & MOUNTING PAD KITS:

STREET ROD KITS: CONTAIN RUBBER SEALS, WEATHERSTRIP,
MOUNTING PADS, DOOR BUMPERS AND ETC. REQUIRED FOR
THE AVERAGE STREET ROD.

1937 - '43 COUPES	\$129.95/EA.
1937 - '43 PICK UP TRUCKS	\$99.95/EA.
1937 - '40 SEDANS	\$159.95/EA.
1941 - '43 SEDANS	\$119.95/EA.

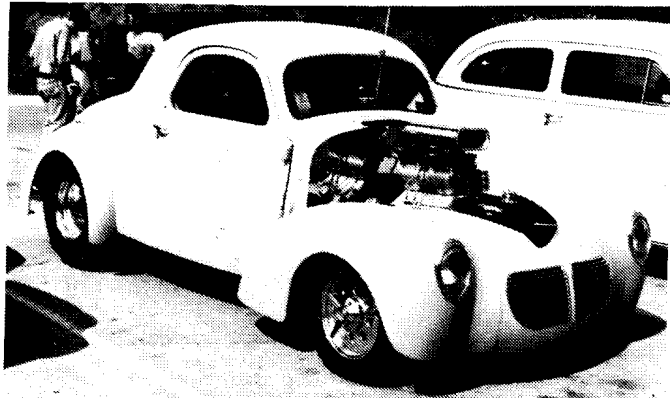
ATTACHING CLIPS FOR STAINLESS BODY TRIM MOULDINGS

1937 - '40 (9/16" WIDTH MOULDING) \$28.00/100 PCS
1941 - '43 (3/4" WIDTH MOULDING) \$28.00/100 PCS

1933-'36 GRILLES	1933-'36 HEADLIGHT RINGS
1940-'42 GRILLES	1940-'42 HEADLIGHT RINGS
1933-'36 HEADLIGHT LENSES	1939-'42 TAILLIGHT LENSES
1940-'42 HEADLIGHT LENSES	"WILLYS" SCRIPT EMBLEMS

5575 Crooked Creek Drive • Alta Loma, CA 91701

CLASSIFIEDS



FOR SALE: '40 Willys coupe (pro-street). Glass front & rear fenders, Pinto R&P front and narrowed 12 bolt with ladder bars and coil overs. Tunnel rammed 425 Olds' with 400 Turbo, tilt, Autometer gauges, Weld wheels with K/O. Needs paint & interior. Roger Smith, 133 Rogers Circle, SC, 29650. (803)877-6842 after 5:00

FOR SALE: 1938 Willys Pick-up. Body & body parts in excellent condition & in primer. This one is done right. Call Tom Tusco 3571 E. Landis Ave, Vineland, NJ, 08360. (609)692-5054.

FOR SALE: Complete steel 1940 front end. (no trim) very rough. \$200. 1937 PU bed w/tailgate, also very rough, \$100. Also one set .030 over 9:1 pistons & one set std bore .8:1 pistons for 392 Chrysler, both forged. \$100 each. Call Rick after 6 pm (617)784-7123 Mass.

FOR SALE: Willys rear fenders, 1942 ex. cond. \$60.00. Willys front doors, will fit '37 sedan also 40-41 pick-ups, includes handles and regulators, \$20.00 ea. Willys rear doors for sedan, includes handles and regulators, \$20.00 ea. Call Jerry (916)222-3803 Calif.

FOR SALE: 1940 Willys parts, make offer; 4 cyl. eng; comp., 2-trans, rear-end comp w/springs, drive line, steering box and column, front axle comp w/springs. Many stock parts like pistons, rings bearings, rear axle, king pin set, 8- tail light lens, and more. Call Larry, (503)673-8314 (day) 672-3911 (eve) in Oregon.

FOR SALE: Sedan parts; set SS trim, \$75.00, rear fenders, \$75.00 pr., rocker panels, \$100, rear bumper extensions, \$75., rear seat, \$75, wing window handles N.O.S. close to orig \$10, pair, 4 lug wheel, \$20., hood inner panel, \$25., pair truck running board mounts \$70. Also have sedan and truck doors. Intake/Exh gaskets, \$3.00 ea.

WANTED: 1941 coupe, parts cars & trucks, also 33-42 parts cars & trucks, on west coast. 1941 coupe trunk, trunk handle, license plate hold; tail lights, trim, rocker panels, bumpers, headlight glass, headlight rims, license plate light & lens, door handles outside & inside, gas tank, control knobs, doors window moulding mirrors. Call Stan, (415)239-2387 Calif.

FOR SALE: 1937 4dr sedan, solid body, doors, and floor pan. Fenders are not rusty, but dented, \$750. '37-'38 front ends, make offer. Fiberglass pick-up doors, \$50. May have coupe for sale by spring '89.

WANTED: 1939 headlight glass, retainer rings, buckets and reflectors. Also need pickup rear window moulding, '38 headlight glass & retainer rings. Call Bill (612)426-5179 Minnesota.

FOR SALE: American 5 spoke spindle mount wheels (Anglia spindles) glass beaded, \$225. pr. WANTED: To buy old racing decals, Logghe stamping Co., Don Carlits (Troy, Mich.), Woody Gilmore chassis, Giovanni Cama, one or a thousand, what do you have? Call Dave, (313)425-9155 Michigan



FOR SALE: 1941 American sedan. Minor floor-board rust at the firewall but apart from that very sound. Located near Aspen CO. Bob Keck, (307)733-8426 days. (307)733-1911.

FOR SALE: 41-42 Willys parts, exact to scale blueprint of "Willys" tailgate lettering, \$10. trunk handle, sedan, \$15., wiper motor, \$20., 3-rear license plate lights w/glass & bulb, sedan, \$15., "Americar" horn button NOS but shelf worn, \$15.

WANTED: 1933 model 77 sedan parts. 1 set wiper arms and blades, headlight lenses (glass), cover plate that covers bottom hole of grill, inside windshield latch and brackets to open windshield hand throttle knobs & cables, floor starter pedal. Also any 33-41 Willys literature, catalogs, ads, etc. Call Dexter, (209)577-5050 or 625-3650 (eve) Calif.

WANTED: 40 or 41 coupe to build as a pure race car. Just a body is fine and I don't mind if it's rough and rusty. A 33 or 36 coupe would also be acceptable. Also want any 392 Hemi speed parts or complete motors, anyone got a spare 426 lying around? Call Dave, (804)857-6302, VA.

WANTED: 38-39 Willys 2-door sedan, any condition considered. 33 Willys outside door handles. Call Steve, (408)688-3317 Calif.

WANTED: 1940-41 Willys coupe with good V8 drive train or solid original. Could trade equal valued 1969 SS Chevelle with fresh 454, 4 spd. 513 12 bolt posi, street or strip. X-clean. Call Frank, (312)837-5343, IL.

WANTED: Films or videos of the following; Angelo Greco's orange '40 coupe that raced at Connecticut Dragway in the 1960's. Ellison & McGarveys blue '33 flip top-Hill Bros '33 flip top. Call Dennis Pateras, (617)471-4147.

WANTED: For '33 coupe, spare tire panel, windshield frame, steel front & rear fenders, must be in good condition. Call Gerry, (414)682-0820

WANTED: Aurora '41 Willys toy (The Imposter). 60's Drag decals (Halibrand wheels, Doug's Headers w/Willys, W/T Challenger, Moon equipped w/no eyes etc), Old drag racing records and memorabilia. Track posters. Moon items (key chains, pins, hats, catalogs, gas pedals, gauges, 8X10's of 60's drag cars, 60's speed T-shirts, etc, etc, etc. Call Frank, (516)243-6827.

WANTED: 37-42 coupe, anything considered. Bill Reed, 7428 S. Pearl St., R.D. Oakfield, NY 14125.

WANTED: 1941-42 Willys coupe, anything considered, also any leads for same. Jim Frank, (619)422-5806.

WANTED: '41 PU rear window moulding. Call Butch, (619)426-6909.

FOR SALE: '33 Willys tube frame, 2x3 Rect' tubing, \$500. '33 Wheel tubs, Aluminum, \$50 set. Harry Sheffler, 15 Huron Ave, Pittsburgh, PA, 15237.

WANTED: Are there any members out there who are in the insurance business or have any contacts? If so drop me a line at the club as this would speed up plans for a W.C.W.C. meet.

KP.

